



## Installation Guide

# Broadband ADSL Router

Model No. SP3354 V3

<http://www.micronet.info>

### **CE Declaration of conformity**

This equipment complies with the requirements relating to electromagnetic compatibility, EN55022 class A for ITE, the essential protection requirement of Council Directive 89/336/EEC on the approximation of the laws of the Member States relating to electromagnetic compatibility.

---

### **FCC Part 68**

This equipment complies with Part 68 of the FCC Rules. On the bottom of this equipment is a label that contains the FCC Registration Number and Ringer Equivalence Number (REN) for this equipment. You must provide this information to the telephone company upon request.

The REN is useful to determine the quantity of devices you may connect to the telephone line and still have all of those devices ring when your number is called. In most, but not all areas, the sum of the REN of all devices connected to one line should not exceed five (5.0). To be certain of the number of devices you may connect to your line, as determined by the REN, you should contact your local telephone company to determine the maximum REN for your calling area.

If the modem causes harm to the telephone network, the telephone company may discontinue your service temporarily. If possible, they will notify you in advance. But if advance notice isn't practical, you will be notified as soon as possible. You will be advised of your right to file a complaint with the FCC.

The telephone company may make changes in its facilities, equipment, operations, or procedures that could affect the proper operation of your equipment. If they do, you will be notified in advance to give you an opportunity to maintain uninterrupted telephone service.

If you experience trouble with this modem, please contact your dealer for repair/warranty information. The telephone company may ask you to disconnect this equipment from the network until the problem has

been corrected or you are sure that the equipment is not malfunctioning.

This equipment may not be used on coin service provided by the telephone company. Connection to party lines is subject to state tariffs.

#### Installation

This device is equipped with a USOC RJ11C connector.

---

### FCC Part 15

The modem generates and uses radio frequency energy. If it is not installed and used properly in strict accordance with the user's manual, it may cause interference with radio and television reception. The modem has been tested and found to comply with the limits for Class B computing devices in accordance with the specifications in Subpart B, Part 15 of the FCC regulations. These specifications are designed to provide reasonable protection against such interference in a residential installation. However, there is no guarantee that interference will not occur in a particular installation. FCC regulations require that shielded interface cables be used with your modem.

If interference does occur, we suggest the following measures be taken to rectify the problem:

- 1) Move the receiving antenna.
- 2) Move the modem away from the radio or TV.
- 3) Plug the modem into a different electrical outlet.
- 4) Discuss the problem with a qualified radio / TV technician.

---

### CAUTION:

Changes or modifications not expressly approved by the party responsible for compliance to the FCC Rules could void the user's authority to operate this equipment.

#### Cable connections:

All equipment connected to this modem must use shielded cable as

the interconnection means.

#### Notes:

Operation is subject to the following two conditions:

- 1) This device may not cause harmful interference, and
- 2) This device must accept any interference received including interference that may cause undesired operation.

# Table of Contents

CE Declaration of conformity.....	1	3.6.5 Virtual Server .....	37
Chapter 1 Introduction .....	6	3.6.6 DNS.....	38
1.1 Overview .....	6	3.6.7 Bridge Filtering .....	40
1.2 Features .....	7	3.6.8 Save Settings.....	41
1.3 System Requirements.....	8	3.6.9 Reboot Without Saving .....	42
Chapter 2 Installation.....	9	3.7 Admin Privilege.....	43
2.1 Checklist.....	9	3.7.1 WAN Status .....	43
2.2 The Front LEDs.....	10	3.7.2 ATM Status .....	44
2.3 The Rear Ports .....	11	3.7.3 TCP Status.....	45
2.4 Hardware installation.....	12	3.7.4 Route Table .....	46
Chapter 3 Configuration .....	15	3.7.5 Learned (Bridge) MAC Table.....	49
3.1 Purpose.....	15	3.7.6 ADSL Configuration.....	50
3.2 Determine your connection settings .....	15	3.7.7 RIP Configuration.....	51
3.3 Connecting the ADSL Router to your network.....	17	3.7.8 Password Configuration.....	54
3.4 Configuring with Web Browser .....	18	3.7.9 Miscellaneous Configuration .....	56
3.5 Status .....	19	3.7.10 Reset to Factory Default .....	58
3.5.1 Home .....	19	3.7.11 Diagnostic Test .....	59
3.5.2 ADSL.....	21	3.7.12 Code Image Update .....	61
3.5.3 LAN.....	23	3.7.13 Network Code Image Update .....	62
3.5.4 PPP .....	24	3.7.14 System Log.....	64
3.6 Configuration.....	25	Chapter 4 Troubleshooting .....	65
3.6.1 WAN.....	25	Appendix A Glossary.....	70
3.6.2 LAN.....	29	Appendix B Cabling / Connection.....	80
3.6.3 PPP .....	31		
3.6.4 NAT .....	34		

# Chapter 1 Introduction

This ADSL Router provides home connectivity to an ADSL service provider network over an ADSL/Asynchronous Transfer Mode (ATM) physical layer. The Router can run upstream maximum transmission rates of 640Kbps and downstream maximum transmission rates of 8Mbps. The actual rate depends on the copper category of your telephone wire, distance from the central office and the type of ADSL service subscribed.

The 4 -port 10/100M Ethernet provides connection to an Ethernet LAN or Ethernet-equipped PC, and this Router is easy to install and to configure.

## 1.1 Overview

SP3354 is built upon a scalable architecture and is fully compliant with full-rate ADSL (T1.413 Issue 2 and G.dmt standards) and the splitterless G.Lite (G.992.2) standards, including Annex A (ADSL over POTS) and Annex B (ADSL over ISDN). This broad level of compliance ensures that products based on the AccessRunner can address the existing installed base and continued deployment of ADSL lines.

This ADSL Router allows an always-on high-speed broadband connection to the Internet. It uses existing twisted-pair telephone lines to deliver data rates at more than 100 times the speed of conventional dial-up modems, and without the interruptions that can plague telephone service. Data transfer rates of up to 8 Mbps downstream and 1 Mbps upstream make it the ideal solution for high-bandwidth applications for corporate networks, Internet and video delivery.

Networking support includes both bridge and router modes. The router mode includes advanced features such as Network Address

Translation (NAT), Dynamic Host Protocol (DHCP) and Routing Information Protocol (RIPv2) processor, ADSL DMT Engine, Analogue Front End (AFE) and Line Driver.

## 1.2 Features

### ADSL Compliance

- Compliant with ADSL standards
  - Full-rate ANSI.413 Issue 2 and ITU G.dmt (G.992.1) standards
  - Splitter less ITU G.lite (G.992.2) specification
  - Annex A (ADSL over POTS) and Annex B (ADSL over ISDN)
- DMT modulation and demodulation
- Full-rate adaptive modem
  - Maximum downstream rate of 8 Mbps
  - Maximum upstream rate of 1 Mbps
- Tone detection for low power mode
- Supports splitter less ADSL implementation
- Supports Dying Gasp
- Interoperable with all major DSLAM equipment

### ATM Protocols

- WAN mode support:
  - PPP over ATM (RFC 2364) and
  - PPP over Ethernet (RFC 2516)
- LAN mode support:
  - bridged/routed Ethernet over ATM (RFC 1483) and
  - classical IP over ATM (RFC 1577)
- ATM Forum UNI 3.1/4.0 PVC
- Up to 8 VCs (virtual circuits)
- ATM SAR (segmentation and reassembly)
- ATM AALC (adaption layer type 5)
- OAM F4/F5

### Bridge Mode

- Ethernet to ADSL self learning Transparent Bridging (IEEE 802.1D)
- Supports up to 128 MAC learning addresses

### Router Mode

- IP routing -RIPv2
- Static routing

- DNS Proxy
- Port Forwarding
- DHCP (dynamic host configuration protocol) server and client
- NAT (network address translation)
- MAPT (network address and port translation)
- ICMP (Internet control message protocol)
- Simultaneous USB and Ethernet operation

#### Security

- User authentication for PPP
- PAP (password authentication protocol)
- CHAP (challenge authentication protocol)
- Password protected system management

#### Ethernet Interface

- Compliant with IEEE 802.3 and 802.3u 10/100 Mbps

#### HTTP Web-Based Management

- Firmware upgrade via FTP
- Customizable Web pages
- WAN and LAN side connection statistics
- Configuration of static routes and routing table
- Password protected access
- Selection of bridge or router mode
- PPP user ID and password
- Configuration of VCs (virtual circuits)

### 1.3 System Requirements

- 1) Personal computer (PC)
- 2) Pentium II 233 MHz processor minimum
- 3) 32 MB RAM minimum
- 4) 20 MB of free disk space minimum
- 5) Ethernet Network Interface Controller (NIC) RJ45 Port
- 6) Internet Browser

## Chapter 2 Installation

This chapter offers information about installing your router. If you are not familiar with the hardware or software parameters presented here, please consult your service provider for the values needed.

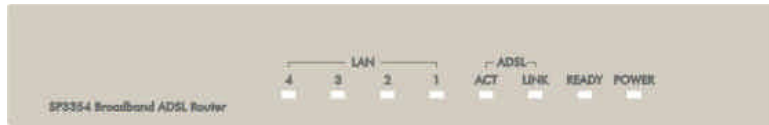
### 2.1 Checklist

Check the shipping box carefully to ensure that the contents include the items you ordered. If any of the items are missing or damaged, contact your local distributor. The contents of your carton may vary depending on your service provider.

#### Contents description

- 1) ADSL Router for home/office use.
- 2) ADSL Router Installation and Operation Guide (this publication)
- 3) Quick Installation Guide
- 4) Power supply with 9V DC / 1.5 A power adapter
- 5) ADSL cable RJ-11 telephone cable
- 6) Ethernet cable Ethernet category 5 twisted pair cable

## 2.2 The Front LEDs



LED	State	Description
POWER	ON	Modem is powered ON
	OFF	Modem is powered OFF
READY	Flashing	When the router is working properly
	OFF	The router is not ready
ADSL		
LINK	ON	"Showtime"-successful connection between ADSL modem and telephone company's network
	Flashing	"Handshaking"-modem is trying to establish a connection to telco's network
	OFF	Modem is powered OFF ADSL Carrier Detect if LED is flash
ACT	Flashing	Data transmitting between LAN and PC
LAN		
LAN(1-4)	These four LAN (Local Area Network) ports are where you will connect networked devices, such as PCs, print servers, remote hard drives, and anything else you want to put on your network.	

## 2.3 The Rear Ports



Connector	Description
POWER	Power connector with 9Vdc/ 1.5 Ampere
Reset Button	The reset button, when pressed, resets the modem without the need to unplug the power cord
LAN (1-4)	Router is successfully connected to a device through the corresponding port (1, 2, 3 or 4). If the LED is flashing, the Router is actively sending or receiving data over that port.
ADSL Connector	The RJ-11 connector allows data communication between the modem and the ADSL network through a twisted-pair phone wire

## 2.4 Hardware installation

This section describes how to connect and configure the ADSL router.

### Step 1. Connect the ADSL Line

Connect the router directly to the wall jack using the included ADSL cable.

### Step 2. Connect a Workstation to the Router's LAN port

There are two methods to connect the router and workstation. The one use the crossover Ethernet cable to connect directly between them. The other use straight Ethernet cable to connect router with hub (or switch), then go to the workstation.

### Step 3. Connect the Power Adapter to the Router

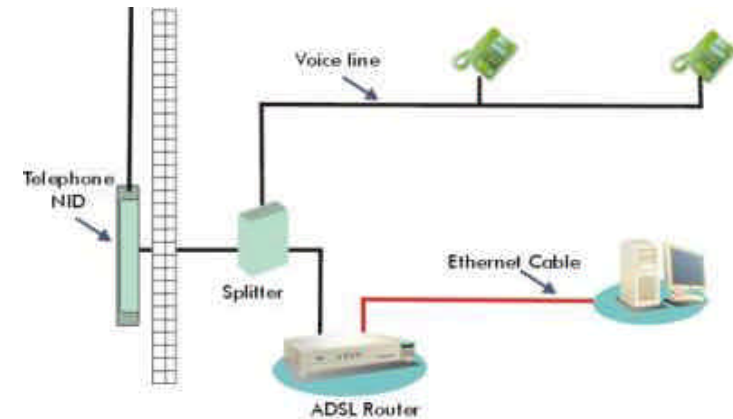
Connect the power adapter to the port labeled POWER on the rear panel of router.

### Step 4. Connect All Cables to the Network

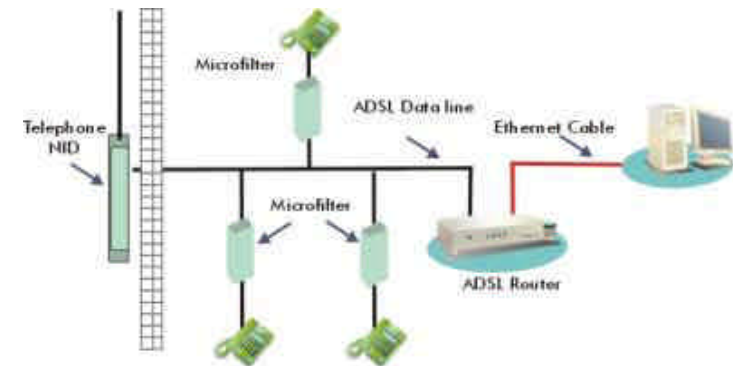
The procedure for connecting cables differs depending on whether or not your telephone equipment is connected to a POTS splitter.

## POTS Splitter Configuration (ADSL over POTS)

A POTS splitter separates data signals from voice signals on your telephone line. The POTS splitter works by running a separate data line from the voice line, so that the ADSL router has a dedicated cable for data transmission. Figures below show to connect all cables to the Router.

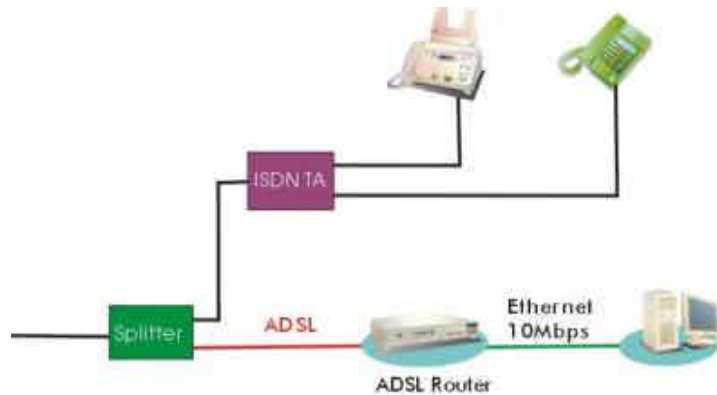


Note: The POTS splitter may also be installed on the outside of the house adjacent to the telephone network interface device (NID).



### ISDN Splitter Configuration (ADSL over ISDN)

A ISDN splitter separates ADSL signals from ISDN signals on your ISDN telephone line. The ISDN splitter works by running a separate ADSL line from the ISDN line, so that the ADSL router has a dedicated cable for data transmission. Figure shows how to connect all cables to the Router.



Note: The ISDN splitter may also be installed on the outside of the house adjacent to the telephone network interface device (NID).

## Chapter 3 Configuration

### 3.1 Purpose

This chapter provides information about configuring the ADSL Router.

### 3.2 Determine your connection settings

Before you configure the router, you need to know the connection information supplied by your ADSL service provider.

#### Protocol Selection

- 1) PPPoE VC-Mux
- 2) PPPoE LLC
- 3) PPPoE None
- 4) PPPoA VC-Mux
- 5) PPPoA LLC
- 6) 1483 Bridged IP VC-Mux
- 7) 1483 Bridged IP LLC
- 8) 1483 Routed IP VC-Mux
- 9) 1483 Routed IP LLC
- 10) Classical IP over ATM

Gather the information as illustrated in the following table and keep it for reference.

<b>PPPoE VC-Mux:</b>	VPI/VCI, Service Name, Username, Password, and Domain Name System (DNS) IP address (it can be automatically assigned from ISP or be set fixed)
<b>PPPoE LLC:</b>	VPI/VCI, Service Name, Username, Password, and Domain Name System (DNS) IP address (it can be automatically assigned from ISP or be set fixed)
<b>PPPoE None:</b>	VPI/VCI, Service Name, Username, Password, and Domain Name System (DNS) IP address (it can be automatically assigned from ISP or be set fixed)
<b>PPPoA VC-Mux:</b>	VPI/VCI, Username, Password, and Domain Name System (DNS) IP address (it can be automatically assigned from ISP or be set fixed).
<b>PPPoA LLC:</b>	VPI/VCI, Username, Password, and Domain Name System (DNS) IP address (it can be automatically assigned from ISP or be set fixed).
<b>1483 Bridged IP VC-Mux:</b>	VPI/VCI
<b>1483 Bridged IP LLC:</b>	VPI/VCI
<b>1483 Routed IP VC-Mux:</b>	VPI/VCI, IP address, Subnet mask, Gateway address, and Domain Name System (DNS) IP address (it is fixed IP address).
<b>1483 Routed IP LLC:</b>	VPI/VCI, IP address, Subnet mask, Gateway address, and Domain Name System (DNS) IP address (it is fixed IP address).
<b>Classical IP over ATM:</b>	VPI/VCI, IP address, Subnet mask, Gateway address, and Domain Name System (DNS) IP address (it is fixed IP address).

### 3.3 Connecting the ADSL Router to your network

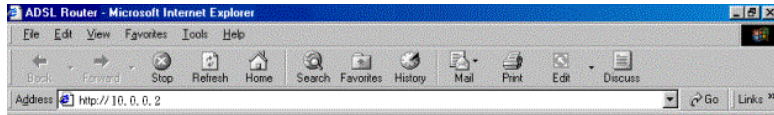
Unlike a simple hub or switch, the setup of the ADSL Router consists of more than simply plugging everything together. Because the Router acts as a DHCP server, you will have to set some values within the Router, and also configure your networked PCs to accept the IP Addresses the Router chooses to assign them. Generally there are several different operating modes for your applications. And you can know which mode is necessary for your system from ISP. These modes are router, bridge, PPPoE+NAT and NAT and PPPoA+NAT. Actually all these are for IP address of WAN.

1. If your ISP provides RFC1483 Routed mode, it means the IP address of LAN will be routed via WAN. You should set the "Router" mode in the ADSL router for this situation, also set the IP address / netmask of LAN and VPI/VCI of WAN. Then save and reboot Router, it will work fine with your whole system. The computer should be set the fixed assigned IP address with the same domain at this mode.
2. If your ISP provides RFC1483 Bridge mode plus PPPoE, it means the IP address of computer or router will be assigned automatically via PPPoE. There are two methods you can use at this mode. First you can set the "bridge" mode, give VPI/VCI of WAN and install PPPoE driver on your computer. Then save and reboot router, it will work fine with your whole system. You need to use Dial\_Up\_Network to get the IP address of computer every time. Second method you can set the "PPPoE+NAT" mode, give VPI/VCI of WAN and set user's name & password for PPPoE on your router. Then save and reboot router, it will work fine with your whole system. The computers should be set as DHCP client to get IP dynamically.
3. If your ISP provides RFC2364 mode, it means the IP address of router will be assigned automatically via PPPoA. You can set the "PPPoA+NAT" mode, give VPI/VCI of WAN and set user's name & password for PPPoA on your router. Then save and reboot router, it will work fine with your whole system. The computers should be set as DHCP client to get IP dynamically.
4. If your ISP provides RFC1483 Routed and the serial static IP

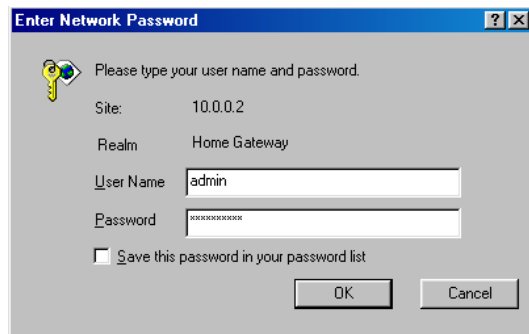
address for you, there are two methods you can use at this mode. First you can set the "router" mode and give VPI/VCI of WAN. Then save and reboot router, it will work fine with your whole system. The computers should be set the fixed assigned IP address at this method. Second method you can set the "NAT" mode, give VPI/VCI/ IP address /netmask of WAN. Then save and reboot router, it will work fine with your whole system. The computers should be set as DHCP client to get IP dynamically.

### 3.4 Configuring with Web Browser

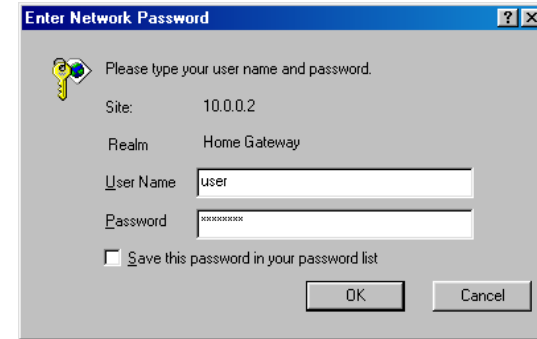
Open the web browser, enter the local port IP address of the ADSL Modem/Router, which default at <http://10.0.0.2>, and click 'Go' to get the login page.



If you want to configure the device with administrator level, type **admin** in the username field and **epicrouter** in the password field.



If you want to configure the device with the user level, type **user** in the username field and **password** in the password field.



Then, click **OK** to log in. You can modify these passwords for security and management purpose.

At the configuration homepage, the left navigation pane where bookmarks are provided links you directly to the desired setup page. Click on the desired item to expand the page in the main navigation pane.

### 3.5 Status

#### 3.5.1 Home

The **Home Page** shows the firmware versions and WAN and LAN interface status.

**Firmware Version:** This field display the Conexant firm ware (vxworks.z) version number.

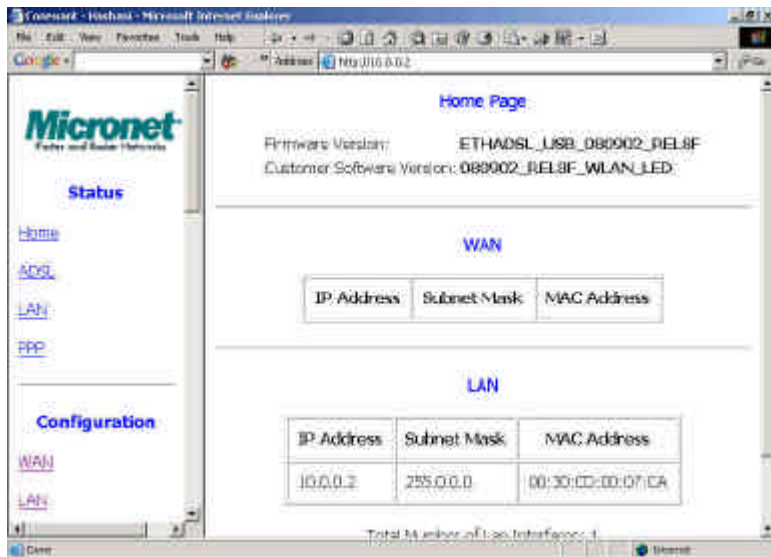
**Customer Software Version:** This field displays the customer' sown firmware version number and it is based on revision.txt.

**WAN:** These fields display the IP address, Subnet Mask and MAC address for the WAN ADSL interface.

**LAN:** These fields display the IP address, Subnet Mask and MAC address for the LAN interface.

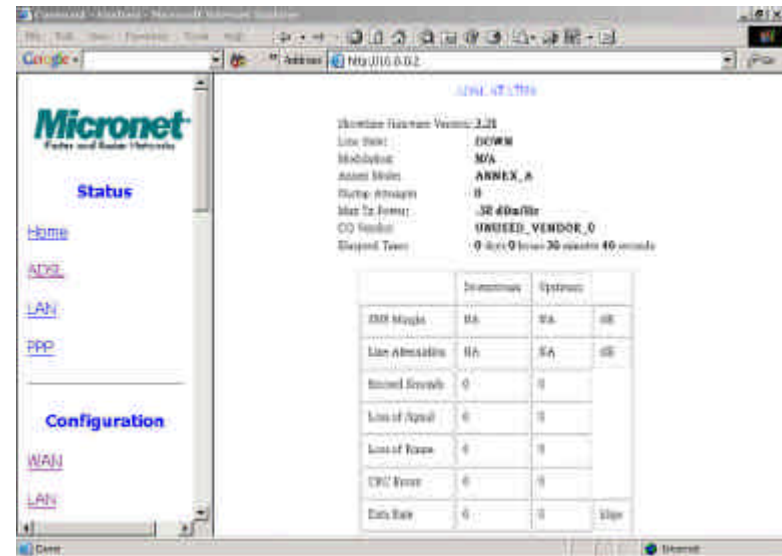
**Total Number of LAN Interfaces:** This field displays the total number of available interfaces for the LAN interface.

**Number of Ethernet Devices Connected to the DHCP Server:** These fields display the DHCP client table with the assigned IP addresses.



### 3.5.2 ADSL

The **ADSL Status** page shows the ADSL physical layer status.



**Showtime Firmware Version:** This field displays the Conexant ADSL data pump firmware version number.

**ADSL Line Status:** This field displays the ADSL connection process and status.

**ADSL Modulation:** This field displays the ADSL modulation status for G.dmt or T1.413.

**ADSL Annex Mode:** This field displays the ADSL annex modes for Annex A or Annex B.

**ADSL Startup Attempts:** This field displays the ADSL connection attempts after loss of showtime.

**ADSL Max Tx Power:** This field displays the transmit output

power level of the CPE.

**ADSL CO Vendor:** This field displays the Central Office DSLAM vendor name, if available.

**Elapsed Time:** This field displays the time of the modem has been in operation.

**SNR Margin:** Amount of increased noise that can be tolerated while maintaining the designed BER (bit error rate). The SNR Margin is set by Central Office DSLAM. If the SNR Margin is increased, bit error rate performance will improve, but the data rate will decrease. Conversely, if the SNR Margin is decreased, bit error rate performance will decrease, but the data rate will increase.

**Line Attenuation:** Attenuation is the decrease in magnitude of the ADSL line signal between the transmitter (Central Office DSLAM) and the receiver (Client ADSL Modem), measured in dB. It is measured by calculating the difference in dB between the signal power level received at the Client ADSL modem and the reference signal power level transmitted from the Central Office DSLAM.

**Errored Seconds:** The error during Showtime, whenever, a given sec contains CRC error, that second will be declared error second.

**Loss of Signal:** This field displays the count of event of ADSL signal loss.

**Loss of Frame:** This field displays the count of event of ADSL frame loss.

**CRC Errors:** This field displays the number of transmit data frames containing CRC errors.

**Data Rate:** This field displays the ADSL data rate.

**Latency:** This field displays the latency modes for fast or interleave.

### 3.5.3 LAN

The **LAN** page shows the information and status of LAN port, DHCP client table, Ethernet link and USB link.

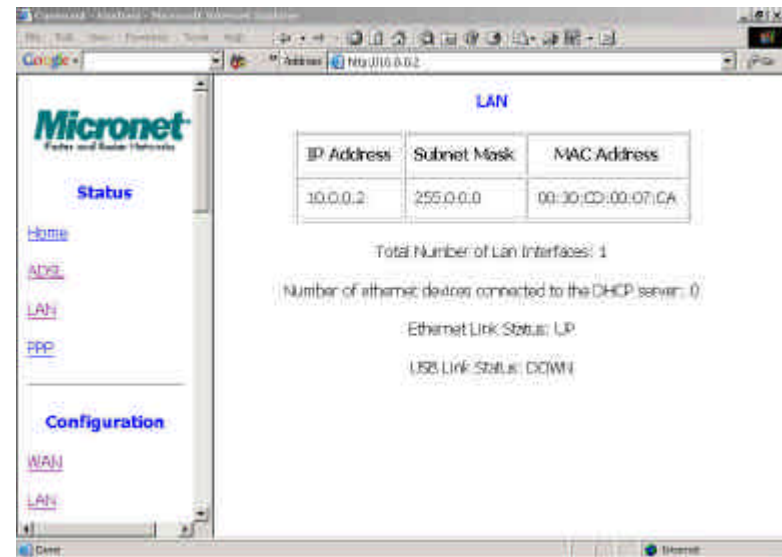
**LAN:** These fields display the IP address, Subnet Mask and MAC address for the LAN interface.

**Total Number of LAN Interfaces:** This field displays the total number of available interfaces for the LAN interface.

**Number of Ethernet Devices Connected to the DHCP Server:** These fields display the DHCP client table with the assigned IP addresses and MAC addresses.

**Ethernet Link Status:** This field displays the link up or down for the Ethernet.

**USB Link Status:** This field displays the link up or down for the USB.

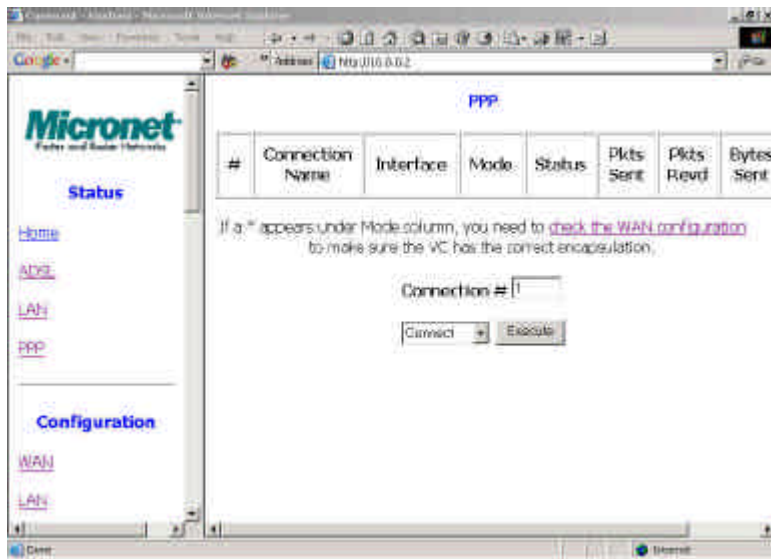


### 3.5.4 PPP

The **PPP Status** page shows the status of PPP for each PPP interface.

**PPP:** These fields display the Connection Name (user defined), Interface (PVC), Mode (PPPoE or PPPoA), Status (Connected or Not Connected), Packets Sent, Packets Received, Bytes Sent and Byte Received.

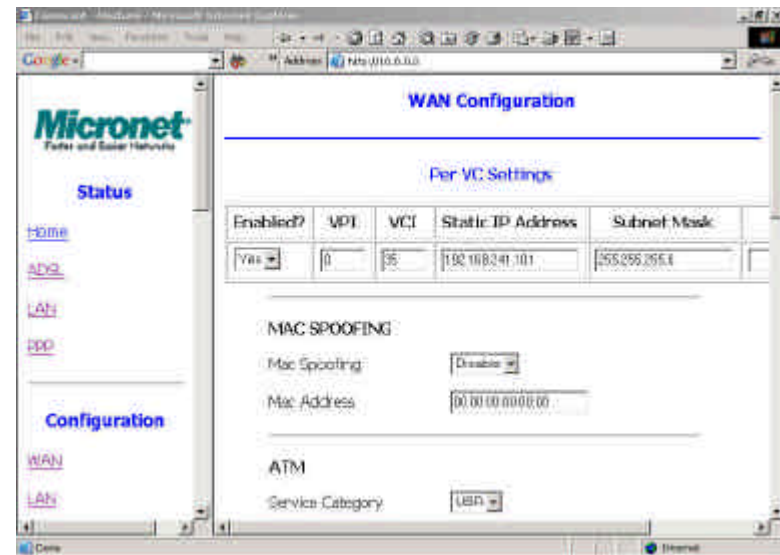
**Connect and Disconnect:** This field allows the user to manually connect/disconnect the PPP connection for each PPP interface. In another word, each PPP session can be connected and disconnected individually.



### 3.6 Configuration

#### 3.6.1 WAN

The **WAN configuration** page allows the user to set the configuration for the WAN/ADSL ports.



**Per VC Settings:** Under Per VC Setting, it provides the configurations for VPI/VCI, Static IP Address Subnet Mask, and Gateway. The Static IP Address, Subnet Mask and Gateway are used for Static IP configuration. Current Conexant firmware supports eight PVCs.

To switch between the PVCs, please choose the options of virtual circuit and click on the Submit button to switch over.

**MAC Spoofing:** The MAC Spoofing is developed to solve the scenario when the ISP only recognizes one MAC address. Copy the ISP-recognized MAC address here.

## ATM

**Service Category:** UBR and CBR are supported from the ATM.  
**Bandwidth:** Bandwidth setting takes effect only when the CBR is selected. The maximum available bandwidth is from the upstream data rate of ADSL status page (see Section 3.4.2 Status - ADSL).

## Encapsulation, Bridge, PPP, and DHCP Client

WAN Configuration	Bridge Mode
IP address	N/A
Subnet Mask	N/A
Encapsulation	1483 Bridged IP LLC, 1483 Bridged IP VC-Mux
Bridge	Enabled
PPP Service	N/A
PPP User name	N/A
PPP Password	N/A
DHCP Client enable	Unchecked

WAN Configuration	Router Mode		
	PPPoA/PPPoE	Dynamic IP	Static IP
IP address	Automatically assigned	by ISP	Provided by ISP
Subnet Mask	Automatically assigned	by ISP	Provided by ISP
Encapsulation	PPPoA LLC/VC-Mux, PPPoE LLC/VC-Mux,	1483 Bridged/Routed IP LLC, 1483 Bridged/Routed VC-Mux, Classical IP over ATM	
Bridge	Disabled	Disabled	
PPP Service	Provided by ISP	N/A	
PPP User name	Provided by ISP	N/A	
PPP Password	Provided by ISP	N/A	
DHCP Client enable	Unchecked	Checked	Unchecked

## PPP Configuration

The current release supports multiple PPP sessions per PVC. The PPP configuration in the WAN configuration page is for the first PPP session for each PVC. The predefined PPP Account Name (Account ID) is "Simple PPP Account 0" for PVC0 and predefined PPP Connection Name is "Simple PPP Session 0" for PVC0. For the other PVC X, the predefined account name and connection name will be Simple PPP Account X and Simple PPP Session X. X is the PVC number from 1 to 7.

For the multiple PPP sessions, please go to PPP Configuration page.

**Service Name:** The service name of PPP is required by some ISPs. If the ISP does not provide the Service Name, please leave it blank.

**Disconnect Timeout:** The Disconnect Timeout allows the user to set the specific period of time to disconnect from the ISP. The default is 0, which means never disconnect from the ISP.

**MRU:** Maximum Receive Unit indicates the peer of PPP connection the maximum size of the PPP information field this device can be received. The default value is 1492 and is used in the beginning of the PPP negotiation. In the normal negotiation, the peer will accept this MRU and will not send packet with information field larger than this value.

**MTU:** Maximum Transmission Unit indicates the network stack of any packet is larger than this value will be fragmented before the transmission. During the PPP negotiation, the peer of the PPP connection will indicate its MRU and will be accepted. The actual MTU of the PPP connection will be set to the smaller one of MTU and the peer's MRU. The default is value 1492.

**MSS:** Maximum Segment Size is the largest size of data that TCP will send in a single IP packet. When a connection is established between a LAN client and a host in the WAN side, the LAN client and the WAN host will indicate their MSS during the TCP connection handshake. The default value is 1432.

**Automatic Reconnect:** When it is checked, it will maintain the PPP connection all the time. If the ISP shut down the PPP connection, it will automatically reconnect PPP session.

**Authentication:** When AUTO option is chosen, the PAP mode will run first then CHAP.

**Host name:** Required by some ISPs. If the ISP does not provide the Host name, please leave it blank.

### IGMP

IGMP relay/proxy specification and environment: Support IGMP proxy/relay function for ADSL modem, based on the following requirement and case:

On CO side, there must be at least one IGMP querier (router) present. IGMP querier will send IGMP query packet. The ADSL modem is responsible to relay these IGMP query to Ethernet.

End-user multicast application device send IGMP report while receiving IGMP query or being activated by user, the ADSL modem should be responsible to proxy (that is, change source IP to ADSL modem's WAN IP) the IGMP report to ADSL WAN side, include all PVCs. The same case is for IGMP leave packet.

Not necessary to relay multicast routing between two ADSL PVCs or two interfaces in LAN side.

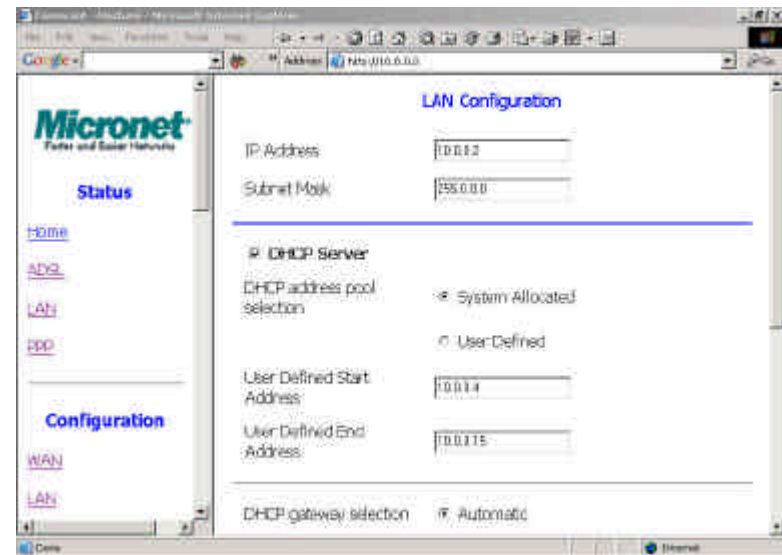
Special purpose multicast packet (such as RIP 2 packet) should run without interference.

Rx Entity	Packet Class	TTL	Action	Notes
ADSL	IGMP query	1	Relay to Ethernet	
	IGMP report	1	Ignore	
	IGMP leave	1	Ignore	
	General Multicast IP	-	Relay to Ethernet	
Ethernet	IGMP query	1	Ignore	
	IGMP report	1	Relay to all ADSL PVC	
	IGMP leave	1	Relay to all ADSL PVC	
	General Multicast IP	-	Ignore	

### 3.6.2 LAN

The **LAN configuration page** allows the user to set the configuration for the LAN port.

**LAN IP Address & Subnet Mask:** The default is 10.0.0.2 and 255.0.0.0. User can change it to other private IP address, such as 192.168.1.2, and 255.255.255.0.



### DHCP Server

**System Allocated:** The DHCP address pool is based on LAN port IP address plus 12 IP addresses. For example, the LAN IP address is 10.0.0.2; the DHCP address pool is at the range of 10.0.0.3 to 10.0.0.14.

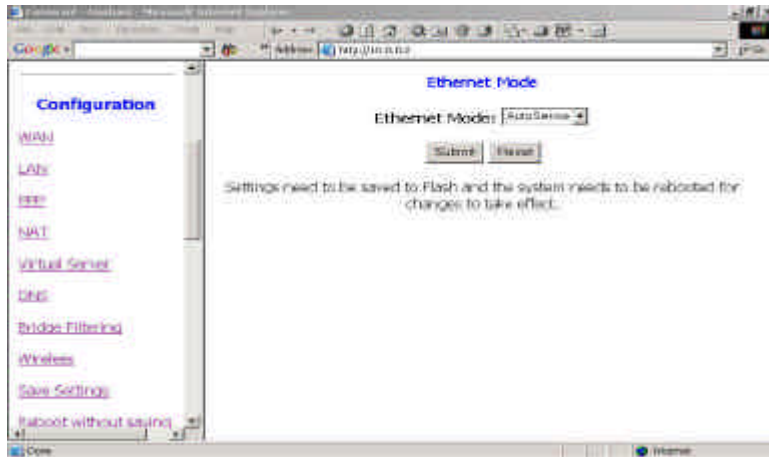
**User Defined:** The DHCP address pool is at the range of User Defined Start Address and User Defined End Address. The

maximum pool size can be 253 IP addresses: 255 total IP addresses – 1 broadcast address – 1 LAN port IP address.

**DHCP Gateway Selection:** The default setting for the DHCP Gateway Selection is “Automatic”. The user can select the “User Defined” to specify “User Defined Gateway Address”. The DHCP server will issue the “User Defined Gateway Address” to the LAN DHCP clients.

**Lease time:** The Lease time is the amount of time of a network user will be allowed to connect with DHCP server. If all fields are 0, the allocated IP addresses will be effective forever.

**User mode:** Under the Single User mode, the DHCP server only allocates one IP address to local PC. Under the Multiple User mode, the DHCP server allocates the IP addresses specified by the DHCP address pool.

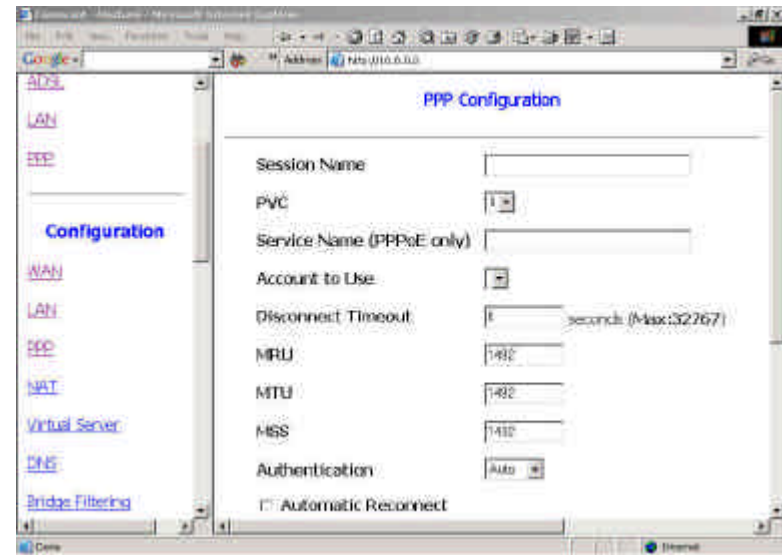


### Ethernet Mode Setting

The Ethernet Mode configuration page allows the user to set the LAN port into Auto Sense, 100 Mbps Full Duplex, 100 Mbps Half Duplex, 10 Mbps Full Duplex or 10 Mbps Half Duplex.

### 3.6.3 PPP

The **PPP Configuration** page allows the user to configure multiple PPP sessions for each PVC. It can support up to total of 16 PPP sessions, and each PVC can support up to 8 PPP sessions. The multiple PPP sessions may be configured with any combination over 8 PVCs.



**Session Name:** This field allows the user to enter his/her own session Name to distinguish different session for different PPP accounts and different PVCs.

**PVC:** This field allows the user to choose the specific PVC for PPP session.

**Service Name:** The service name of PPP is required by some ISPs. If the ISP does not provide the Service Name, please leave it blank.

**Disconnect Timeout:** The Disconnect Timeout allows the user to set the specific period of time to disconnect from the ISP. The default is 0, which means never disconnect from the ISP.

**MRU:** Maximum Receive Unit indicates the peer of PPP connection the maximum size of the PPP information field this device can be received. The default value is 1492 and is used in the beginning of the PPP negotiation. In the normal negotiation, the peer will accept this MRU and will not send packet with information field larger than this value.

**MTU:** Maximum Transmission Unit indicates the network stack of any packet is larger than this value will be fragmented before the transmission. During the PPP negotiation, the peer of the PPP connection will indicate its MRU and will be accepted. The actual MTU of the PPP connection will be set to the smaller one of MTU and the peer's MRU. The default is value 1492.

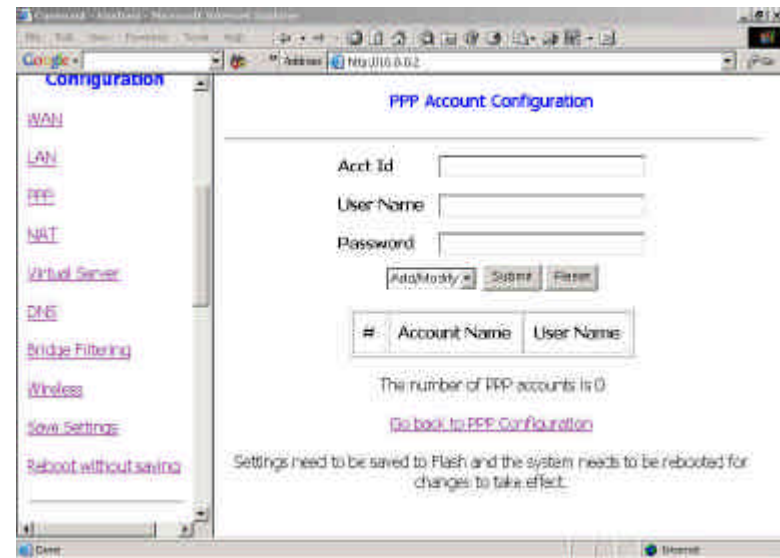
**MSS:** Maximum Segment Size is the largest size of data that TCP will send in a single IP packet. When a connection is established between a LAN client and a host in the WAN side, the LAN client and the WAN host will indicate their MSS during the TCP connection handshake. The default value is 1432.

**Automatic Reconnect:** When it is checked, it will maintain the PPP connection all the time. If the ISP shut down the PPP connection, it will automatically reconnect PPP session.

**Authentication:** When AUTO option is chosen, the PAP mode will run first then CHAP.

**PPP Configuration Status** will be displayed at the bottom of this page to show all the Session Names with its Adapter (PVC number), Mode (PPPoA or PPPoE), Service Name, Account to Use (PPP Account ID), Disconnect Timeout configuration, MRU, MTU, MSS, Authentication Mode (Auto, CHAP or PAP), and Auto Reconnect configuration.

To configure the PPP, must go to the **PPP Account Configuration** page first to configure Account ID, Users Name and Password.



**Account ID:** This field allows the user to enter his/her own account ID to distinguish different accounts.

**User Name:** Enter the PPP user name (usually provided by the ISP).

**Password:** Enter the PPP password (usually provided by the ISP).

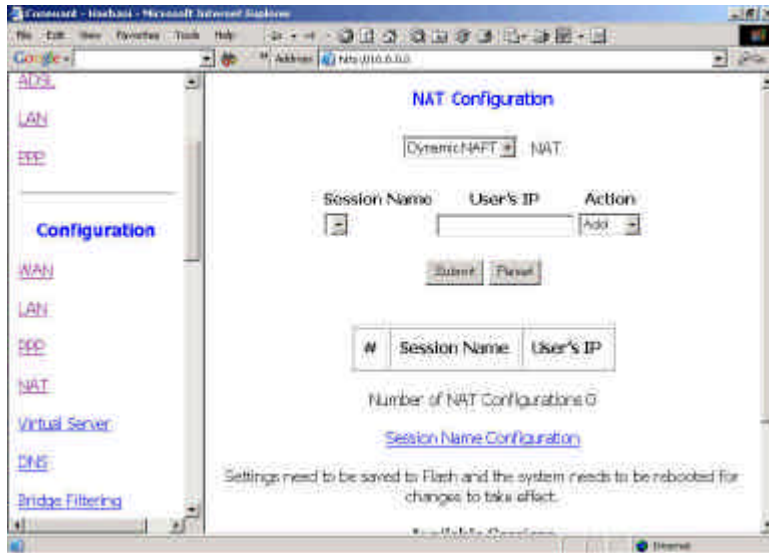
**PPP Account Configuration Status** will be displayed at the bottom of this page to show all the accounts with its Account Name and User Name. (It does not show the password.)

**The Number of PPP Accounts:** This field displays the total number of PPP Accounts entered.

### 3.6.4 NAT

The **NAT Configuration** page allows the user to set the configuration for the Network Address Translation. The default setting is **Dynamic NAT**. It provides dynamic Network Address Translation capability between LAN and multiple WAN connections, and the LAN traffic is routed to appropriate WAN connections based on the destination IP addresses and Route Table. This eliminates the need for the static NAT session configuration between multiple LAN clients and multiple WAN connections.

When the Dynamic NAT is chosen, there is no need to configure the NAT Session and NAT Session Name Configuration.



**Session Name Status** will be displayed at the middle of this page to show the corresponding Session Name with its IP address.

**Available Session Status** will be displayed at the end of this

page to show all the session Names with its WAN Interface.

**Session Name:** This field allows the user to enter his/her own session Name to distinguish different NAT session for different interfaces among different PPP sessions and different PVCs.

**Interface:** This field allows the user to choose specific WAN Interface (PVC or PPP Session) for NAT Session.

**NAT Session Name Status** will be displayed at the bottom of this page to show all the Session Names with its WAN Interface.

Click the link **Go back to NAT Configuration** to the NAT configuration page. Select the **NAT** option. Select the Session Name and assign the PC IP address, and choose the **Add** action. Click the **Submit** button and go to the **Save Settings** to save this configuration.

**NAT allows only one entry (User IP) per session.**

#### NAPT (Static)

The **NAPT** option maps the single WAN IP addresses to many local PCs IP addresses. (1×N). It is the multiple-mapping mechanism. For each WAN Interface, more than one local PCs can be associated with one WAN Interface. Click the link **Session Name Configuration** to add the session name for WAN interface.

**Session Name:** This field allows the user to enter his/her own session Name to distinguish different NAT session for different interfaces among different interfaces among different PPP sessions and different PVCs.

**Interface:** This field allows the user to choose specific WAN Interface (PVC or PPP Session) for NAT Session.

**NAT Session Name Status** will be displayed at the bottom of this page to show all the Session Names with its WAN Interface.

Click the link **Go back to NAT Configuration** to the NAT configuration page. Select the **NAPT** option. Select the Session Name and assign the PC IP address, and choose the **Add** action. Click the **Submit** button and go to the **Save Settings** to save this configuration.

**NAPT allows many entries (User IPs) per session.**

**Session Name Status** will be displayed at the middle of this page to show the corresponding Session Name with its IP address.

**Available Sessions Status** will be displayed at the end of this page to show all the Session Names with its WAN Interface.

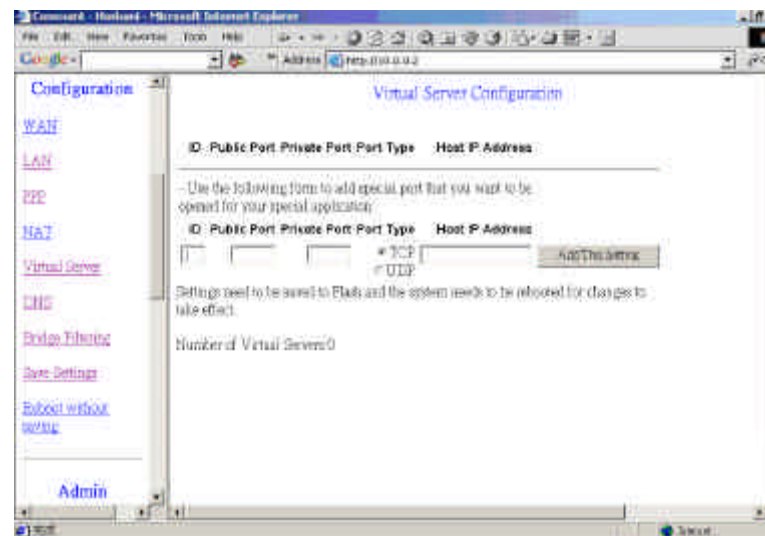
### 3.6.5 Virtual Server

The **Virtual Server Configuration** page allows the user to set the configuration of Virtual Server. This firmware includes the Free BSD version firewall. All UDP/TCP ports are protected from intrusion. If any specific local PCs need to be mapped to the UDP/TCP ports on WAN side, please input the mapping here.

**Public Port:** This field allows the user to enter the port number of the Public Network.

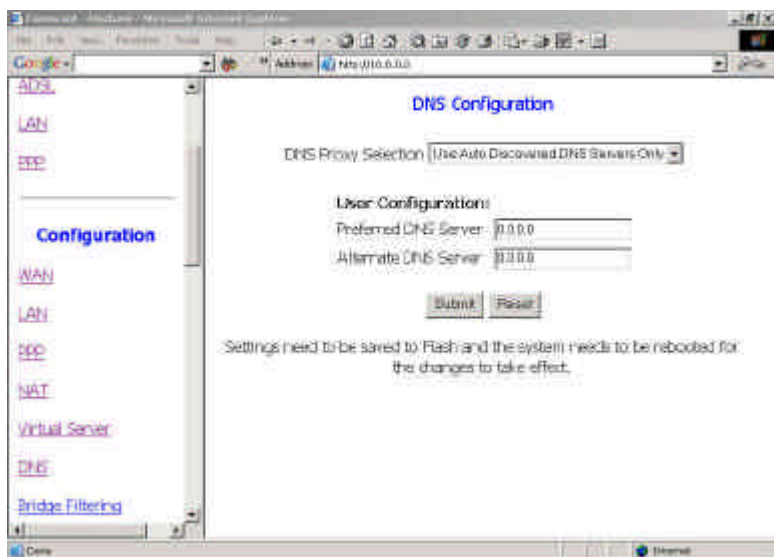
**Private Port:** This field allows the user to enter the port number of the Private Network. In most cases, the private port number is same as public port number.

**Host IP Address:** This field allows the user to enter the private network IP address for the particular sever.



### 3.6.6 DNS

The DNS Configuration page allows the user to set the configuration of DNS proxy. The firmware supports DNS proxy function. For the DHCP requests from local PCs, the DHCP server will set the LAN port IP as the default DNS server. Thus, all DNS query messages will come into LAN port first. The DNS proxy on the ADSL modem recorded the available DNS servers, and forward DNS query messages to one of DNS server.



**Disable DNS Proxy:** The LAN port does not process the DNS query message. For the DHCP requests from local PCs, the DHCP server will set the user-configured preferred DNS sever or alternate DNS server whichever is available as the DNS server. Then all DNS query messages will be directly sent to the DNS servers.

**Use Auto Discovered DNS Servers Only:** The DNS proxy will store the DNS server IP addresses obtained from DHCP client or

PPP into the table. And all DNS query messages will be sent to one of the dynamically obtained DNS servers.

**Use User Configured DNS Servers Only:** The DNS proxy will use the user-configured preferred DNS server and alternate DNS server. And all DNS query message will be sent to one of DNS servers. Enter the DNS IP in the Preferred DNS Server and Alternate DNS Server fields.

**Auto Discovery + User Configured:** The DNS proxy's table has all the IP addresses of dynamically obtained and user configured DNS servers.

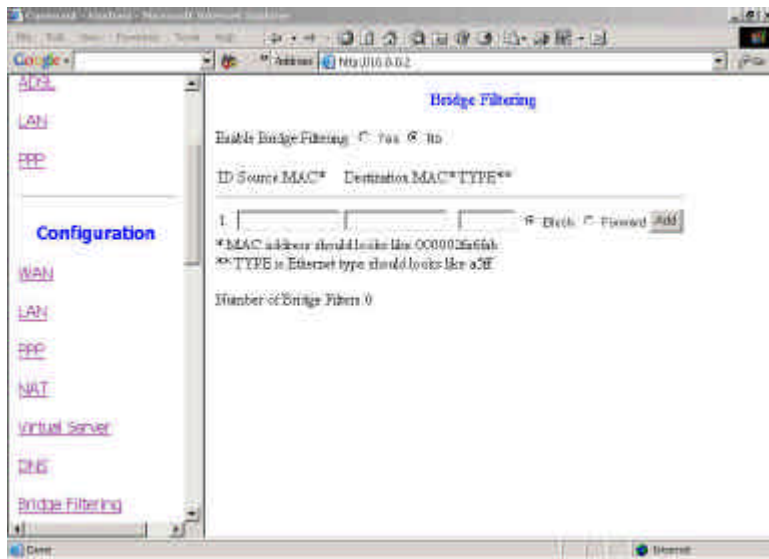
### 3.6.7 Bridge Filtering

The Bridge Filtering configuration page allows the user to set the configuration of IP filtering.

**Source MAC:** When the bridge filtering is enabled, enter the Source MAC address, select Block and click Add. Then all incoming WAN and LAN Ethernet packets matched with this source MAC address will be filtered out. If the Forward is selected, then the packets will be forwarded to the destination PC.

**Destination MAC:** When the bridge filtering is enabled, enter the Destination MAC address, select Block and click Add. Then all incoming WAN and LAN Ethernet packets matched with this destination MAC address will be filtered out. If the Forward is selected, then the packets will be forwarded to the destination PC.

**Type:** Enter the hexadecimal number for the Ethernet type field in Ethernet\_II packets. For example, 0800 is for IP protocol.



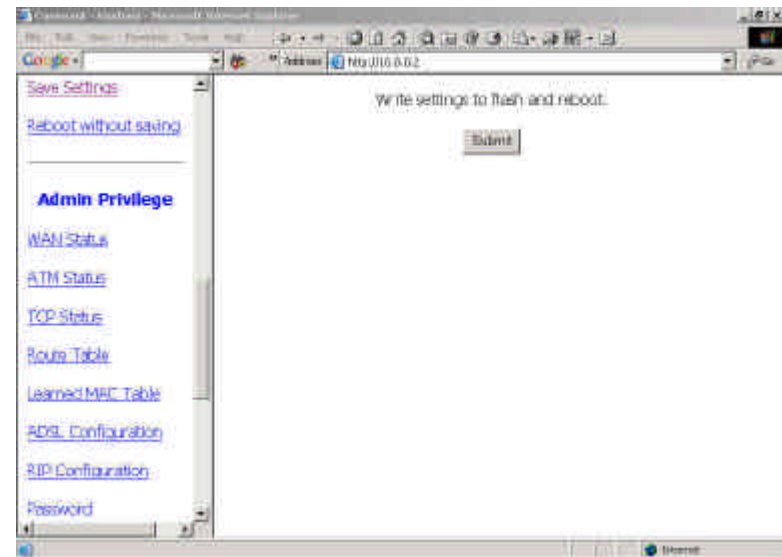
### 3.6.8 Save Settings

The **Save Settings** page allows the user to save the new configuration to the flash and reboot the system.

When the configurations are changes via the Web pages, the new settings need to be saved into the flash, so it is necessary to go to this Save Settings page to save and reboot the system for the changes to be taken effect.

During the Save and Reboot, the following Web page will be displayed “Your setting are being saved and the modem is being rebooted. Please wait...”

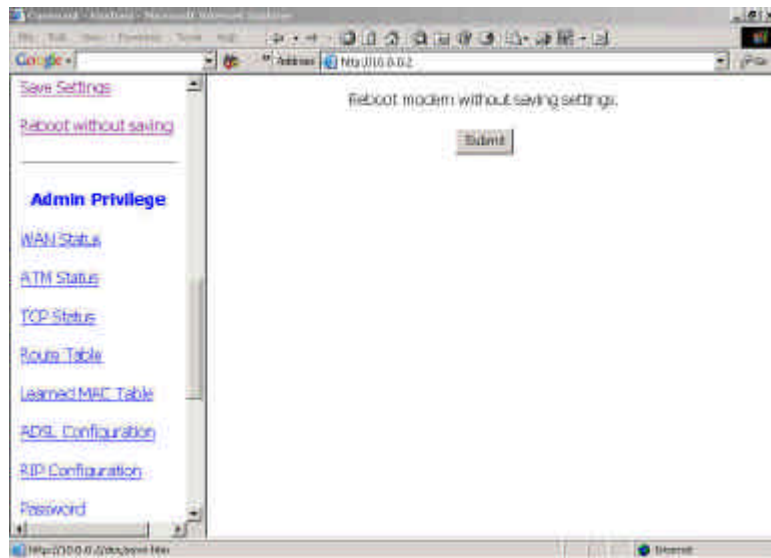
After the Save and Reboot, the following Web page will be displayed “Your setting have been saved and the modem has rebooted.”



### 3.6.9 Reboot Without Saving

The **Reboot Without Saving** page allows the user to reboot the system without save the new configuration to the flash.

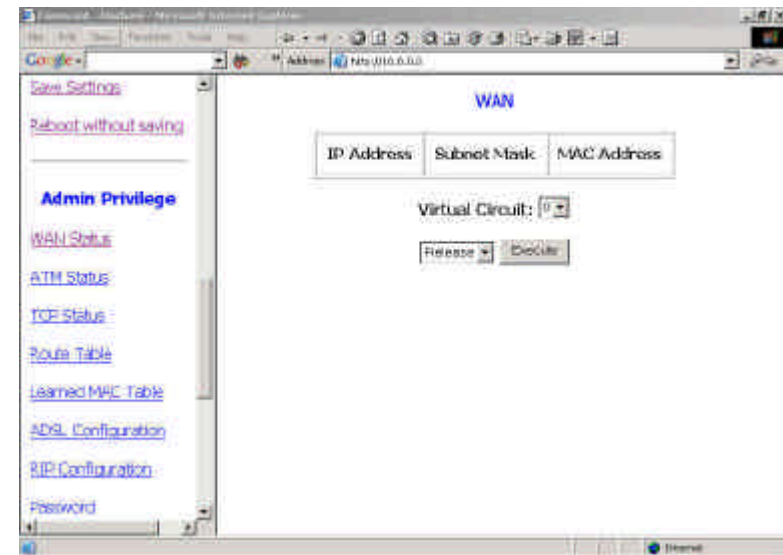
During the Reboot, the following Web page will be displayed “The modem is being rebooted. Please wait...”. After the Reboot, the following Web page will be displayed “The modem has rebooted.”



### 3.7 Admin Privilege

#### 3.7.1 WAN Status

The WAN Status page shows the information and status of WAN PVCs.

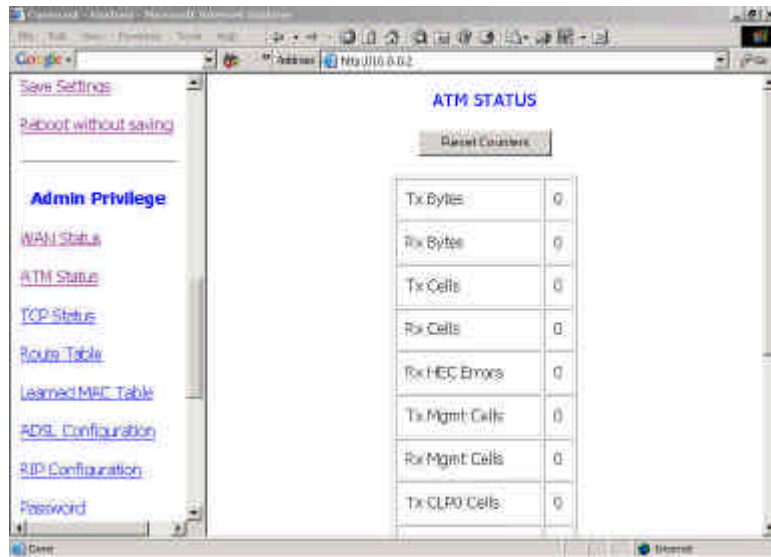


**WAN:** These fields display the IP address, Subnet Mask and MAC address for the WAN (ADSL) interface.

**DHCP Release and Renew:** This field allows the user to release and renew the WAN IP address in the WAN DHCP Client Enabled (dynamic) mode.

### 3.7.2 ATM Status

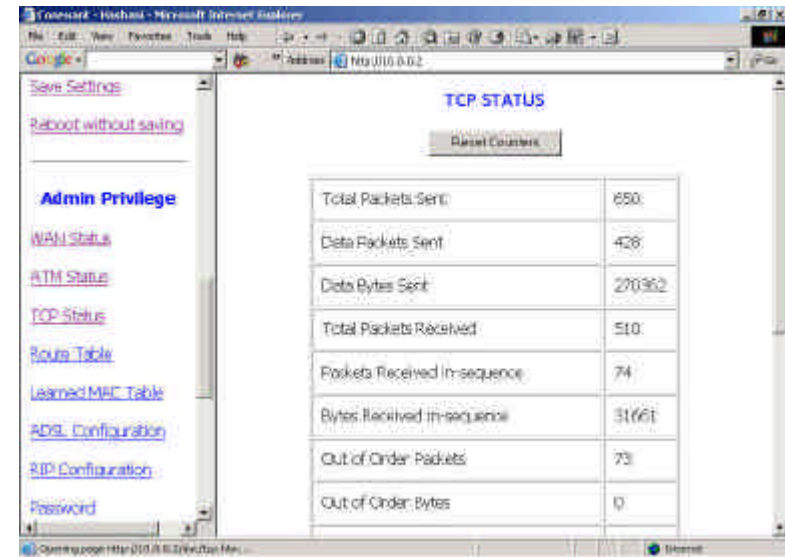
The ATM Status page shows all the statistics information of ATM cells.



**Reset Counters:** This button allows user to reset the ATM Status counter.

### 3.7.3 TCP Status

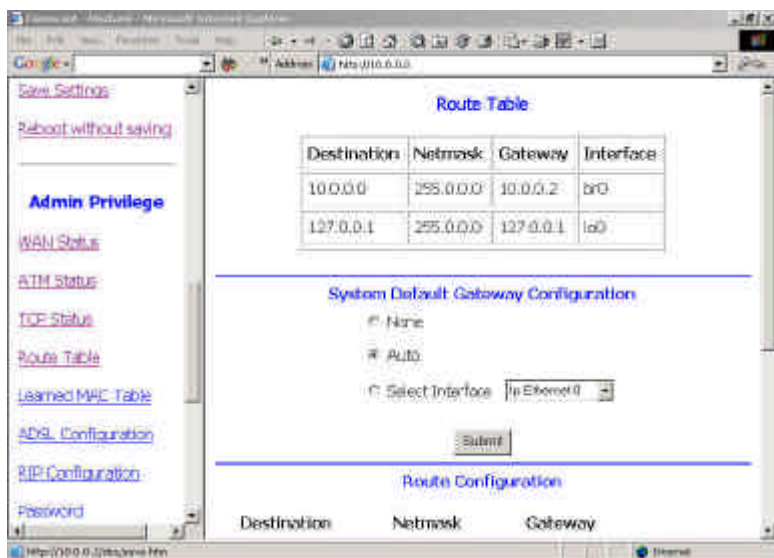
The TCP Status page shows the statistics for all TCP connections.



**Reset Counters:** This button allows user to reset the TCP Status counter.

### 3.7.4 Route Table

The Route Table page displays routing table and allows the user to manually enter the routing entry. The routing table will display the routing status of Destination, Netmask, Gateway, and Interface. The interface br0 means the USB interface; lo0 means the loopback interface; and ppp1 means the PPP interface. The Gateway is the learned Gateway



### Routing Table

The Gateway field of the static route entry allows users to either enter a Gateway IP address or select a Network Interface.

All user-defined routes retained in the CPE memory, regardless if they are already in the Routing Table, are displayed on the same Route Table page.

All user defined route entries kept in the CPE memory during run time are saved to flash when the user chooses to save and reboot the CPE. When CPE restarts, it reloads all saved user-defined routes to the CPE memory and tries to apply to the system.

A user-defined route entry is added to the Routing Table whenever the system provides an environment that makes the route entry applicable. It is removed from the Routing Table whenever the route entry becomes not applicable. e.g. If the route entry's Gateway is associated with a dynamic Network Interface but the connection is not established, then the route entry does not appear in the Routing Table. When that interface comes up later, the route entry is then added.

If the selected Network Interface is static or is dynamic and the connection is already up, then the route entry appears in the Routing Table immediately. If there is a Gateway associated with the selected Network Interface, then that Gateway's IP address appears in the Gateway field of the route entry

If the selected Network Interface is dynamic but the connection is not established, then the route entry does not appear in the Routing Table. When the interface comes up later, the route entry is then added.

### System Default Gateway Configuration

The system-wide Default Gateway now provides three options: Auto, User-selected Network Interface, and None.

**None:** This field allows the user to choose to have no Default Gateway in the CPE

**Auto:** This field allows the user to select the CPE to automatically decide the Default Gateway. (System Default)

**User-selected Network Interface:** This field allows user to select a Network Interface from a list (PVCs, PPP Sessions, USB

and LAN). This option lets the user to associate the system-wide Default Gateway to a Network Interface, static or dynamic, and provides a way to fix the Default Gateway to a dynamic Network Interface before the interface is established.

### Route Configuration

**Destination:** This field allows the user to enter the remote network or host IP address for the static routing.

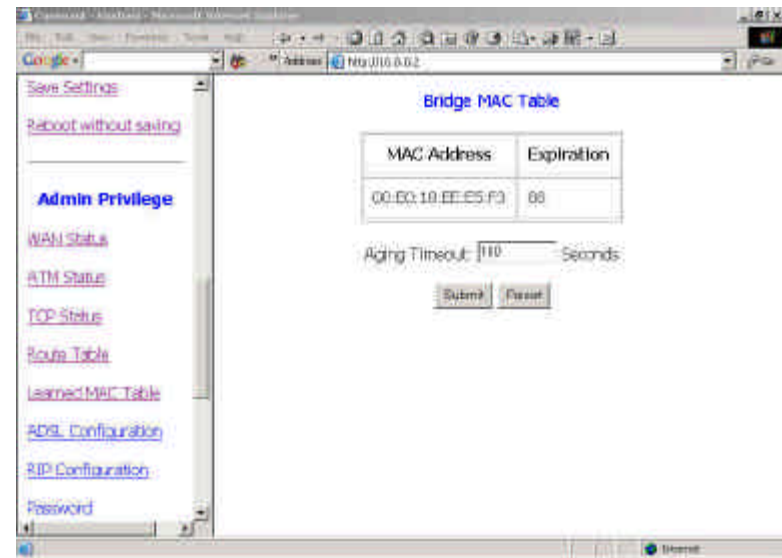
**Netmask:** This field allows the user to enter the Subnet Mask for the static routing.

**Gateway:** This field allows the user to enter the IP address of the gateway device that allows the router to contact the remote network or the host for Specified IP or select an Interface for the Gateway.

**Manually Configured Routes:** This field displays the static route entries entered by the user.

### 3.7.5 Learned (Bridge) MAC Table

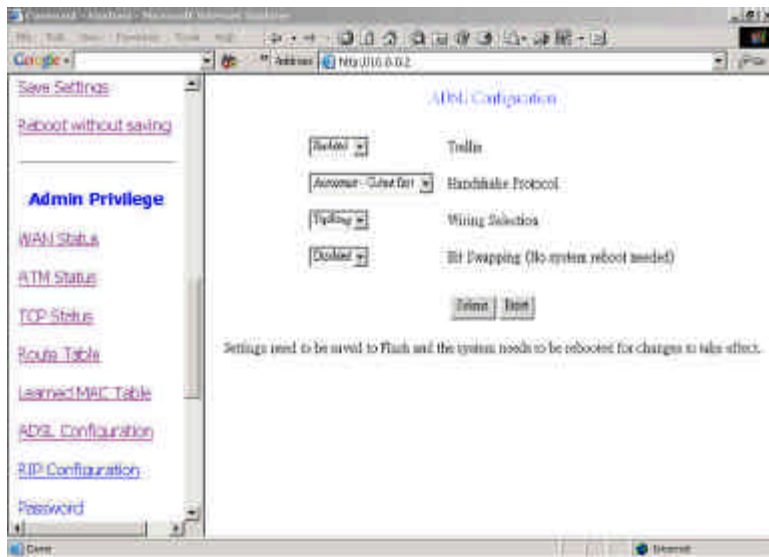
The Learned MAC Table page shows the current learned Bridge MAC table.



**Aging Timeout:** This field allows the user to enter the update period for the MAC table.

### 3.7.6 ADSL Configuration

The ADSL Configuration page allows the user to set the configuration for ADSL protocols.



**Trellis:** This field allows the user to enable or disable the Trellis Code. By default, it is always enabled.

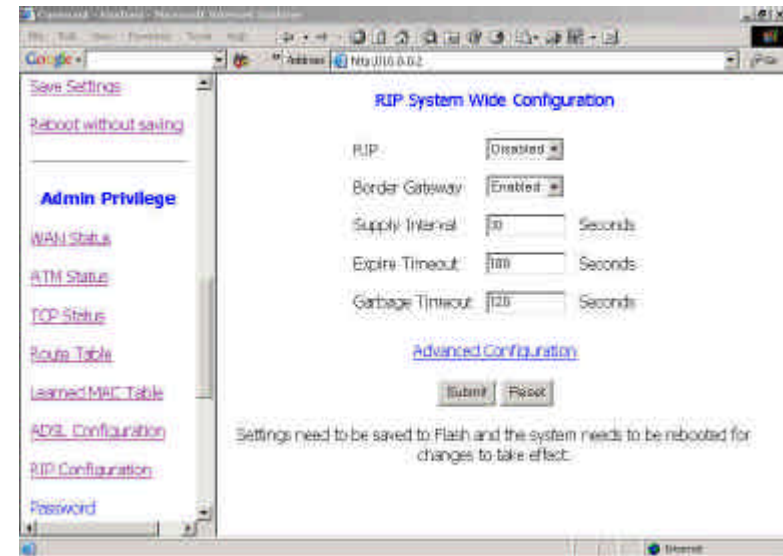
**Handshake Protocol:** This field allows the user to select the ADSL handshake protocol.

**Wiring Selection:** This field allows the user to enter the wiring selection for the RJ-11. Tip/Rip is the default for the board without the inner/outer pair relay

**Bit Swapping:** This field allows the user to enable or disable the upstream bit swapping.

### 3.7.7 RIP Configuration

The RIP Configuration page allows the user to set the configuration for the system wide configuration of RIP. The actual RIP configuration is in the RIP Per Interface Configuration.



**RIP:** This field allows the user to Enable or Disable the RIP session. The resulting RIP session will monitor all network interfaces that are currently available for messages from other RIP routers.

**Supplier Interval:** This field allows the user to enter the Supplier Interval timer in second. This timer specifies how often RIP sends announcements as a RIP Supplier.(Default = 30 seconds)

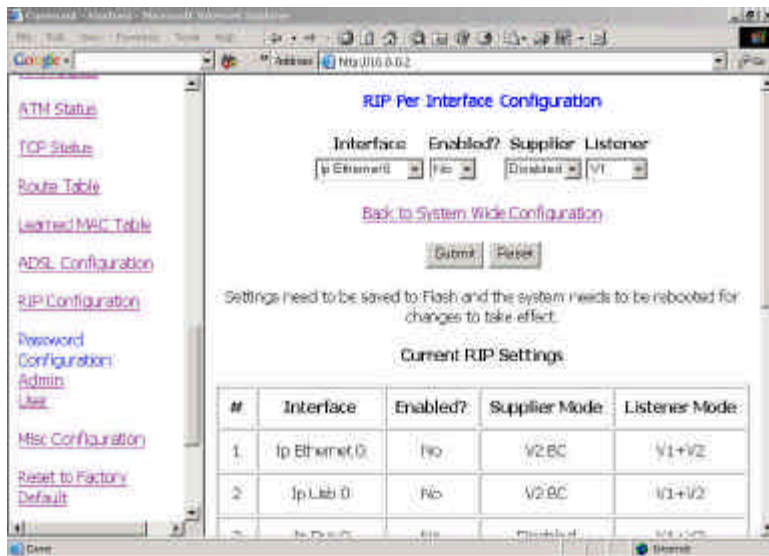
**Expire Timeout:** This field allows the user to enter the Expire timer in second. This timer specifies the expiration time of a route. When a route has not been updated for more than “expire” period of time, it is removed from the Route Table. This route is

invalidated and remains in the internal RIP Route Table. It will be included in the RIP announcements to let other routers know the changes. (Default = 180 seconds)

**Garbage Timeout:** This field allows the user to enter the Garbage timer in second. This timer specifies how long the expired and invalidated routes are kept in the Internal RIP Route Table before it is removed from it. (Default = 300 seconds)

### RIP Per Interface Configuration

The RIP Per Interface Configuration page allows the user to set the configuration for each Interface (PVCs, PPP Sessions, USB and LAN).



**Interface:** This field allows the user to choose the Interface (PVCs, PPP Sessions, USB and LAN), for the RIP to be configured.

**Enable:** This field allows the user to Enable (Yes) or Disable (No) the specified interface for RIP.

**Supplier:** This field allows the user to select the Supplier Mode (RIP Transmit).

**Disabled:** The supplier transmit is disabled.

V1 BC: The supplier transmits in RIPv1 Broadcast.

V2 BC: The supplier transmits in RIPv2 Broadcast.

V2 MC: The supplier transmits in RIPv2 Multicast.

**Listener:** This field allows the user to select the Listener Mode (RIP Receive)

V1: The listener receives the RIPv1 only.

V2: The listener receives the RIPv2 only.

V1+V2: This listener receives the both RIPv1 and RIPv2.

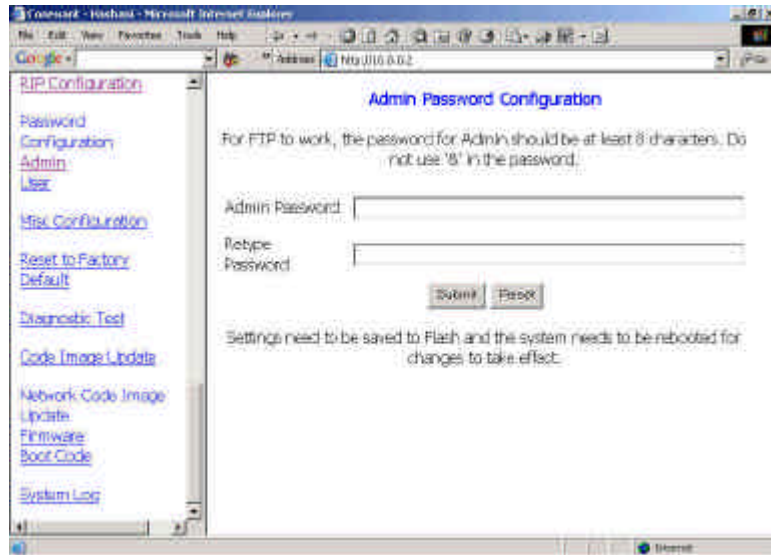
Supplier and Listener are based on section 4.1 "Compatibility Switch" in RFC 1723.

**Current RIP Settings:** This field displays the each interface's RIP status.

### 3.7.8 Password Configuration

#### 1. Admin

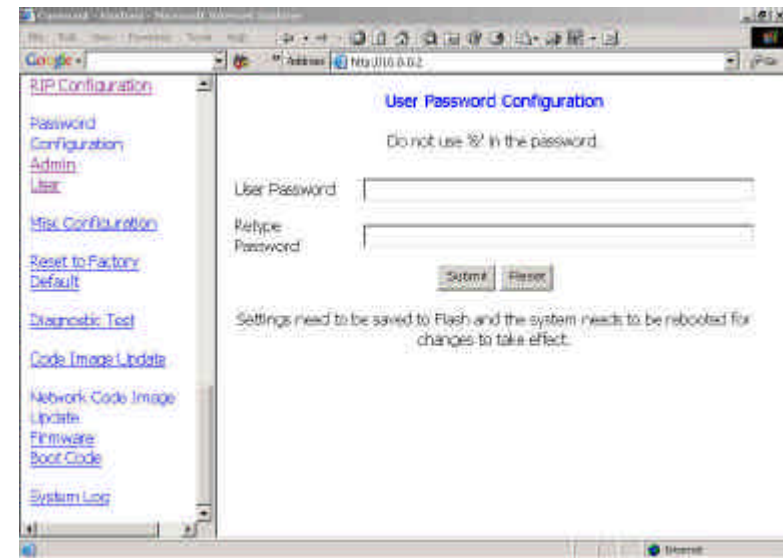
The Admin Password Configuration page allows the user to set the password for administrator.



The Admin password is same as the FTP password, so it must have at least 8 characters for the FTP to work.

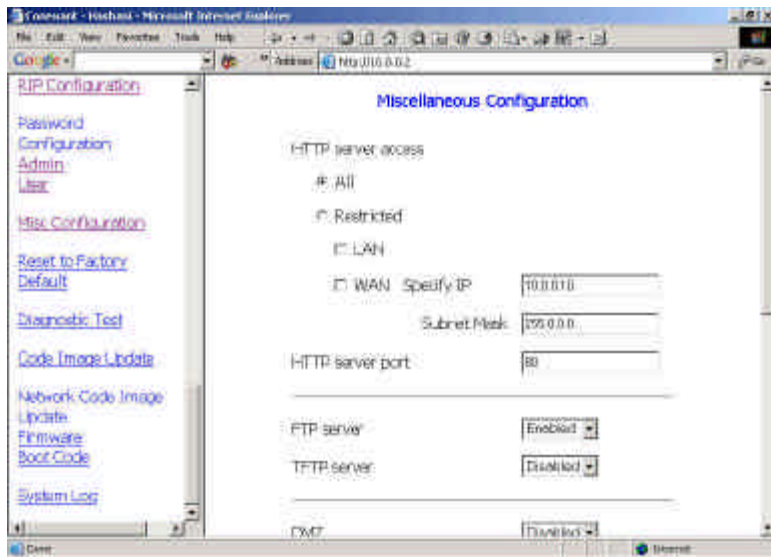
#### 2. User

The User Password Configuration page allows the user to set the password for the user.



### 3.7.9 Miscellaneous Configuration

The **Miscellaneous Configuration** allows the user to set all the miscellaneous configurations.



**HTTP Server Access:** This field allows the user to configure the Web pages can be accessed from.

**All:** When this field is checked, it allows both WAN and LAN access to the Web pages.

**Restricted LAN:** This field allows the Web pages access from LAN side.

**Restricted WAN Specified IP & Subnet Mask:** This field allows the Web access from WAN side with a specify IP and subnet mask.

**HTTP Server Port:** This field allows the user to specify the port of

the Web access. For example, when it is changed to 1001, the HTTP server address for the LAN side is <http://10.0.0.2:1001>.

**FTP server:** This field allows the user to enable or disable the FTP connection.

**TFTP server:** This field allows the user to enable or disable the TFTP connection.

**DMZ:** A DMZ (De-Militarized Zone) is added between a protected network and an external network, in order to provide an additional layer of security. When there is a suspected packet coming from WAN, the firewall will forward this packet to the DMZ host.

**DMZ Host IP:** The IP address of the DMZ host at LAN side.

**DHCP Relay:** If it is enabled, the DHCP requests from local PCs will forward to the DHCP server runs on WAN side. To have this function working properly, please disable the NAT to run on router mode only, disable the DHCP server on the LAN port, and make sure the routing table has the correct routing entry.

**DHCP Target IP:** The DHCP server runs on WAN side.

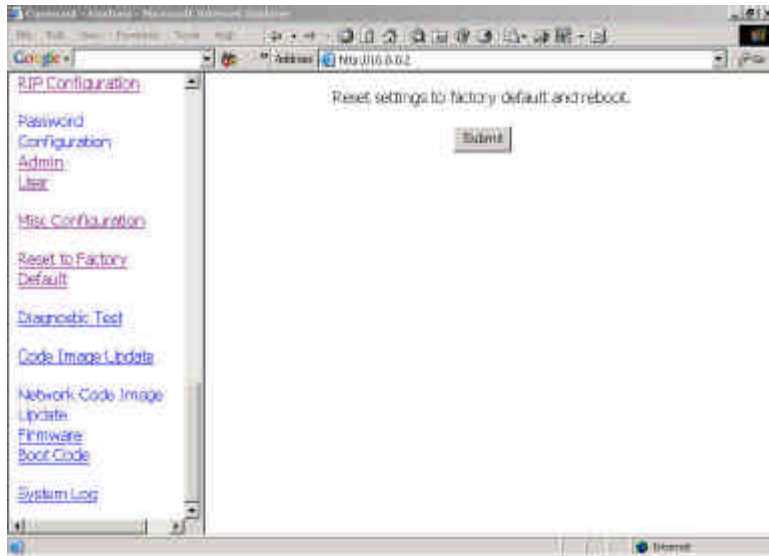
**IGMP Proxy:** Here is the global setting for IGMP Proxy. If it is enabled, then the enabled IGMP Proxy on WAN PVCs will be working. Otherwise, no WAN PVC can have IGMP Proxy working on it.

**PPP connect on WAN access:** If it is enabled, the PPP session will be automatically established when there is a packet wants to go out the WAN.

**PPP Half Bridge:** When the PPP Half Bridge is enabled, only one PC is able to access the Internet, and the DHCP server will duplicate the WAN IP address from the ISP to the local client PC. Only the PC with the WAN IP address can access the Internet.

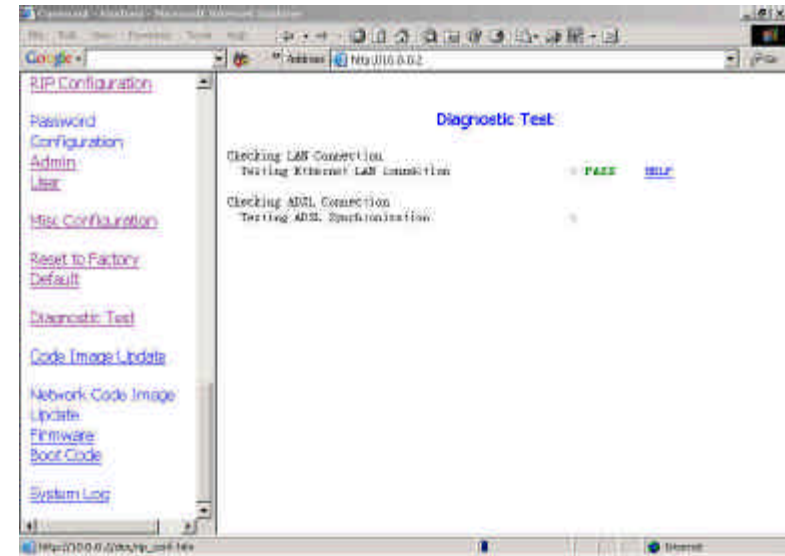
### 3.7.10 Reset to Factory Default

The Reset to Factory Default page allows the user to reset the modem to original factory default configuration (factory.reg).



### 3.7.11 Diagnostic Test

The Diagnostic Test page shows the test results for the connectivity of the physical layer and protocol layer for both LAN and WAN sides.



**Testing Ethernet LAN Connection:** This test checks the Ethernet LAN interface connection.

**Testing ADSL Synchronization:** This test checks the ADSL showtime. If this test returns FAIL, all other tests will be skipped.

**Test ATM OAM Segment Loop Back:** This test sends ATM OAM F5 Segment loop back request cells to the CO. This test will pass if response cell is received. Since some service providers might not support this test, it could still work even if this test fails. If this test fails consistently and the ADSL modem seems not working, make sure the VPI and VCI are configured correctly.

**Test ATM OAM End-to-End Loop Back:** This test sends ATM

OAM F5 End to End loop back request cells to the CO. This test will pass if response cell is received. Since some service providers might not support this test, it could still work even if this test fails. If this test return FAIL consistently and the ADSL modem seems not working, make sure the VPI and VCI are configured correctly.

**Test Ethernet Connect to ATM:** This test checks the ATM AAL5 module is loaded correctly.

**Test PPPoE Connection:** This test checks the PPPOE connection.

**Test PPP Layer Connection:** This test checks the PPP authentication.

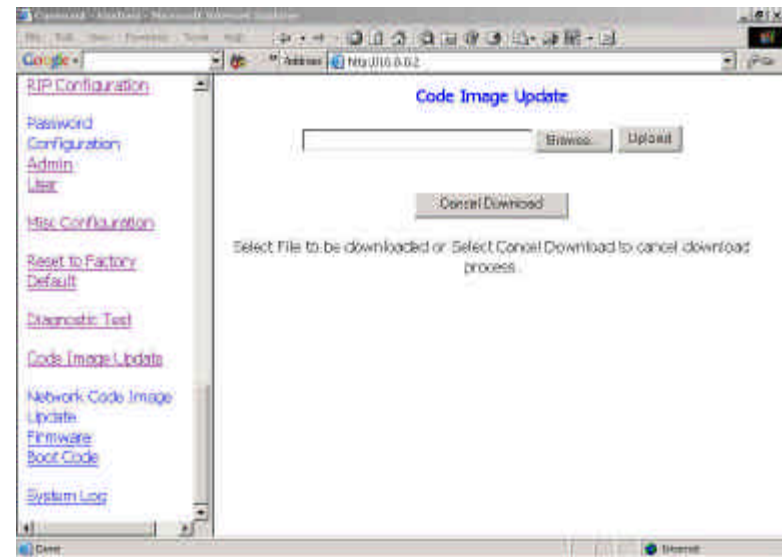
**Test IP Connect to PPP:** This test checks a valid IP address assigned from the service provider.

**Ping Primary DNS:** This test checks the primary DNS can be reached through ping request.

**Query DNS for www.conexant.com:** This test checks the host name can be resolved to IP address through domain name servers

### 3.7.12 Code Image Update

The Code Image Update page allows the user to upgrade the image code locally.



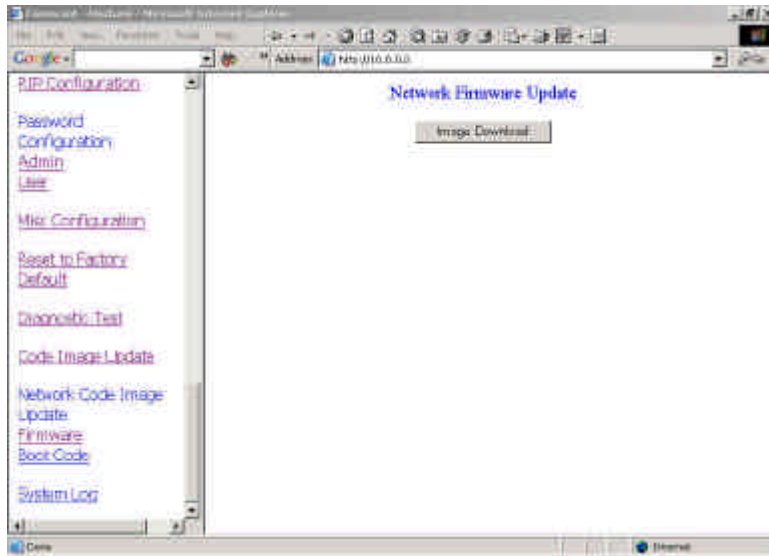
Browse the location of file, firmware.dlf or boorum.dlf file, and click the Upload to start the update.

### 3.7.13 Network Code Image Update

The Network Code Image Update page allows the user to upgrade the image code from the remote FTP server.

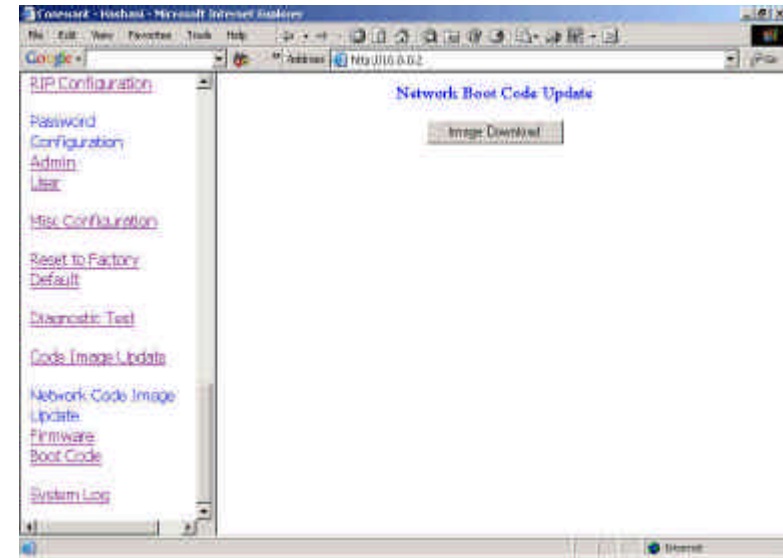
#### 1. Firmware

Assume an FTP server stores the updated image firmware.dlf on Internet. Click Image Download to initiate the updating.



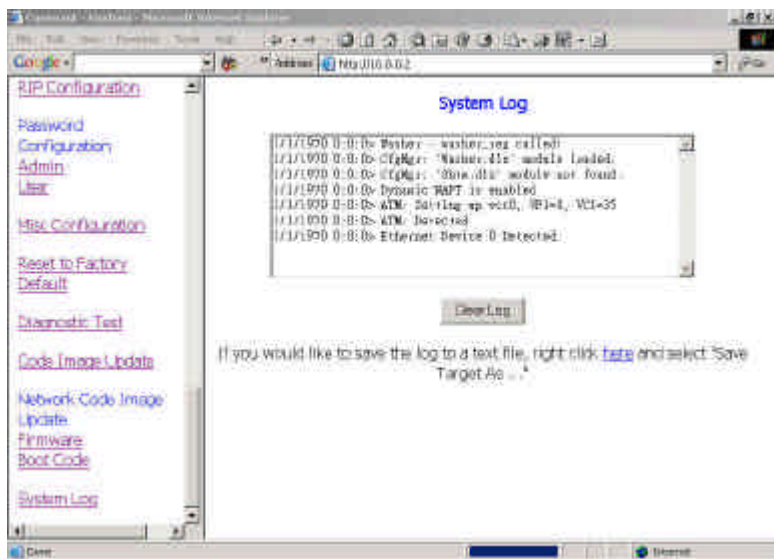
#### 2. Boot Code

Assume an FTP server stores the updated image boorum.dlf on Internet.. Click Image Download to initiate the updating..



### 3.7.14 System Log

The System Log page shows the events triggered by the system.



**Clear Log:** This field allows the user to clear the current contents of the System Log.

**Save Log:** This field allows the user to save the current contents of the System Log by right click HERE and select “Save Target As” to save it into a text file.

## Chapter 4 Troubleshooting

This chapter gives information about troubleshooting your ADSL Router. After each problem description, instructions are provided to help you diagnose and solve the problem.

### Basic Function

- After you turn on power to the Router, the following sequence of events should occur: The Router performs a self-test and loading program for 40 seconds, during which the WAN\_TST LED should blink and then turn off. The WAN\_ACT LED starts to flash at the 1 second interval. The WAN\_ACT LED must always flash.
- The Local Ethernet connections are correctly made to operational devices, and the LAN LED should be on. And it will flash with data transferring.
- The WAN port is connected successfully with the ADSL line from Telecom, the WAN\_LNK and WAN\_CD LED should be on. And the WAN\_LNK LED will flash with data transferring.
- If any of these conditions does not occur, refer to the appropriate following section.

### WAN\_TST LED Not Flash when power on

- Make sure that the power cord is properly connected to your Router and that the power supply adapter is properly connected to a functioning power outlet.
- Check that you are using the 9Vdc (1.5A) power adapter for this product. If the error persists, you have a hardware problem and should contact technical support.

### **WAN\_ACT LED Never Blinks**

- When the Router is turned on the WAN\_TST LED blinks for about 40 seconds and then turns off. If the WAN\_ACT LED does not blink, or if it stops blinking and stays on, there is a fault within the Router.

### **If you experience problems with the WAN\_ACT LED:**

- Cycle the power to see if the Router recovers and the LED blinks for the correct amount of time. If the error persists, you might have a hardware problem and should contact technical support.

### **LAN LED Not On**

If the LAN\_TP LED does not light when the Ethernet connection is made, check the following items:

- Make sure you are using the correct cable.
- Make sure that the Ethernet cable connections are secure at the Router and at the hub or workstation.
- Make sure that power is turned on to the connected hub or workstation.
  - If you are connecting a LAN port of ADSL Router directly to the uplink (MDI) port of a hub, use the crossover network cable.
  - If you are connecting a LAN port of ADSL Router to a normal (MDI-X) hub port, use the straight-through network cable.

### **Troubleshooting the ISP Connection**

If your Router is unable to access the Internet, you should first determine whether the Router is able to obtain a WAN IP address from the ISP. Unless you have been assigned the static IP address, your Router must request an IP address from the ISP. You can determine whether the request was successful using either the Browser interface or the Console interface.

### **If your Router is unable to obtain an ISP address from the ISP, the problem may be one of the following:**

- Your Router may be set incorrectly the login name and password for PPPoE or PPPoA mode. Or your Router may be set wrong WAN IP address for routing mode. If you use bridge mode, you should take care the setting of your workstation.
- Your ISP may check for your PC's Host Name. Assign the PC Host Name of your ISP account to the Router as System Name, or as Host Name in the browser-based Setup Wizard.
- Your ISP only allows one MAC address to connect to Internet, and may check for your PC's MAC address. Inform your ISP that you have bought a new network device, and ask them to use the Router's MAC address.

### **If your Router can obtain an IP address, but your PC is unable to load any web pages from the Internet:**

- Your PC may not recognize any DNS server addresses. A DNS server is a host on the Internet that translates Internet names (such as www addresses) to numeric IP addresses. Typically your ISP will provide the addresses of one or two DNS servers for your use. If you entered a DNS address during the Router's configuration at NAT mode, reboot your PC and verify the DNS address. Alternatively, you may configure your PC manually with DNS addresses, as explained in your operating system documentation.
- Your PC may not have the Router configured as its TCP/IP gateway. If your PC obtains its information from the Router by DHCP, reboot the PC and verify the gateway address.

### **Testing the LAN Path to Your Router**

You can ping the Router from your PC to verify that the LAN path to your Router is set up correctly.

### **To ping the Router from a PC running Windows 95/98/NT:**

- From the Windows toolbar, click on the Start button and select Run.
- In the field provided, type Ping followed by the IP address of the Router at the NAT mode, as in this example: ping 192.168.8.1
- Click on OK.

### **You should see a message like this one:**

Pinging with 32 bytes of data

### **If the path is working, you see this message:**

Reply from < IP address >: bytes=32 time=NN ms TTL=xxx

### **If the path is not working, you see this message:**

Request timed out

### **If the path is not functioning correctly, you could have one of the following problems:**

- Wrong physical connections
  - Make sure the Local LAN LED is on.
  - Check that the corresponding Link LEDs are on for your network interface card and for the hub ports (if any) that are connected to your workstation and Router.
- Wrong network configuration
  - Verify that the Ethernet card driver software and TCP/IP software are both installed and configured on your PC or workstation.
  - Verify that the IP address for your Router and your workstation are correct and that the addresses are on the same subnet.

### **Testing the Path from Your PC to a Remote Device**

After verifying that the LAN path works correctly, test the path from your PC to a remote device:

- From the Windows run menu, type PING -n 10 followed by the IP address of a remote device such as your ISP's DNS server. If the path is functioning correctly, replies as in the previous section are displayed.

### **If you do not receive replies:**

- Check that your PC has the IP address of your Router listed as the default gateway. If the IP configuration of your PC is assigned by DHCP, this information will not be visible in the control panel network utility. Go to the Run... window and run winipcfg. The IP address of the Router should appear as the Default Gateway.
- Check to see that the network address of your PC (the portion of the IP address specified by the netmask) is different from the network address of the remote device.
- Check console to verify the WAN status. If the menu indicates the WAN status as down, check that your ADSL line is connected and functioning. Or check the VPI/VCI setting of the Router with right values.
- If your ISP assigned a host name to your PC, enter that host name as the Router name.
- Your ISP could be rejecting the Ethernet MAC addresses of all but one of your PCs. Most broadband ISPs restrict access by only allowing traffic from the MAC address of your ADSL Router, but some ISPs additionally restrict access to the MAC address of a single PC connected to that modem. If this is the case, you must configure to allow the Router to "borrow" the MAC address from the authorized PC.

## Appendix A Glossary

### Address mask

A bit mask used to select bits from an Internet address for subnet addressing. The mask is 32 bits long and selects the network portion of the Internet address and one or more bits of the local portion. Sometimes is called subnet mask.

### AAL5

ATM Adaptation Layer - This layer maps higher layer user data into ATM cells, making the data suitable for transport through the ATM network.

### ADSL

Asymmetric digital subscriber line

### ATM

Asynchronous Transfer Mode - A cell-based data transfer technique in which channel demand determines packet allocation. ATM offers fast packet technology, real time, demand led switching for efficient use of network resources.

### AWG

American Wire Gauge - The measurement of thickness of a wire

### Bridge

A device connects two or more physical networks and forwards packets between them. Bridges can usually be made to filter packets, that is, to forward only certain traffic. Related devices are: repeaters

which simply forward electrical signals from one cable to the other, and full-fledged routers which make routing decisions based on several criteria.

### Broadband

Characteristic of any network multiplexes independent network carriers onto a single cable. Broadband technology allows several networks to coexist on one single cable; traffic from one network does not interfere with traffic from another. Broadcast A packet delivery system where a copy of a given packet is given to all hosts attached to the network. Example: Ethernet.

### CO

Central Office. Refers to equipment located at a Telco or service provider's office.

### CPE

Customer Premises Equipment located in a user's premises

### DHCP (Dynamic Host Configuration Protocol)

DHCP is software that automatically assigns IP addresses to client stations logging onto a TCP/IP network. DHCP eliminates having to manually assign permanent IP addresses to every device on your network. DHCP software typically runs in servers and is also found in network devices such as Routers.

### DMT

Discrete Multi-Tone frequency signal modulation

### **Downstream rate**

The line rate for return messages or data transfers from the network machine to the user's premises machine.

### **DSLAM**

Digital Subscriber Line Access Multiplex

### **Dynamic IP Addresses**

A dynamic IP address is an IP address that is automatically assigned to a client station (computer, printer, etc.) in a TCP/IP network. Dynamic IP addresses are typically assigned by a DHCP server, which can be a computer on the network or another piece of hardware, such as the Router. A dynamic IP address may change every time your computer connects to the network.

### **Encapsulation**

The technique used by layered protocols in which a layer adds header information to the protocol data unit (PDU) from the layer above. As an example, in Internet terminology, a packet would contain a header from the physical layer, followed by a header from the network layer (IP), followed by a header from the transport layer (TCP), followed by the application protocol data.

### **Ethernet**

One of the most common local area network (LAN) wiring schemes, Ethernet has a transmission rate of 10 Mbps.

### **FTP**

File Transfer Protocol. The Internet protocol (and program) used to transfer files between hosts.

### **Hop count**

A measure of distance between two points on the Internet. It is equivalent to the number of gateways that separate the source and destination.

### **HTML**

Hypertext Markup Language - The page-coding language for the World Wide Web.

### **HTML browser**

A browser used to traverse the Internet, such as Netscape or Microsoft Internet Explorer.

### **http**

Hypertext Transfer Protocol - The protocol used to carry world-wide-web (www) traffic between a www browser computer and the www server being accessed.

### **ICMP**

Internet Control Message Protocol - The protocol used to handle errors and control messages at the IP layer. ICMP is actually part of the IP protocol.

### **Internet address**

An IP address is assigned in blocks of numbers to user organizations accessing the Internet. These addresses are established by the United States Department of Defense's Network Information Center. Duplicate addresses can cause major problems on the network, but the NIC trusts organizations to use individual addresses responsibly. Each address is a 32-bit address in the form of x.x.x.x where x is an eight-bit number from 0 to 255. There are three classes: A, B and C, depending on how many computers on the site are likely to be

connected.

### **Internet Protocol (IP)**

The network layer protocol for the Internet protocol suite

### **IP address**

The 32-bit address assigned to hosts that want to participate in a TCP/IP Internet.

### **ISP**

Internet service provider - A company allows home and corporate users to connect to the Internet.

### **MAC**

Media Access Control Layer - A sub-layer of the Data Link Layer (Layer 2) of the ISO OSI Model responsible for media control.

### **MIB**

Management Information Base - A collection of objects can be accessed via a network management protocol, such as SNMP and CMIP (Common Management Information Protocol).

### **NAT**

Network Address Translation - A proposal for IP address reuse, where the local IP address is mapped to a globally unique address.

### **NVT**

Network Virtual Terminal

### **PAP**

Password Authentication Protocol

### **PORT**

The abstraction used by Internet transport protocols to distinguish among multiple simultaneous connections to a single destination host.

### **POTS**

Plain Old Telephone Service - This is the term used to describe basic telephone service.

### **PPP**

Point-to-Point-Protocol - The successor to SLIP, PPP provides router-to-router and host-to-network connections over both synchronous and asynchronous circuits.

### **PPPoE**

PPP over Ethernet is a protocol for connecting remote hosts to the Internet over an always-on connection by simulating a dial-up connection.

### **Remote server**

A network computer allows a user to log on to the network from a distant location.

### **RFC**

Request for Comments - Refers to documents published by the Internet Engineering Task Force (IETF) proposing standard protocols and procedures for the Internet. RFCs can be found at [www.ietf.org](http://www.ietf.org).

## **Route**

The path that network traffic takes from its source to its destination. The route a datagram may follow can include many gateways and many physical networks. In the Internet, each datagram is routed separately.

## **Router**

A system responsible for making decisions about which of several paths network (or Internet) traffic will follow. To do this, it uses a routing protocol to gain information about the network and algorithms to choose the best route based on several criteria known as "routing metrics".

## **routing table**

Information stored within a router that contains network path and status information. It is used to select the most appropriate route to forward information along.

## **Routing Information Protocol**

Routers periodically exchange information with one another so that they can determine minimum distance paths between sources and destinations.

## **SNMP**

Simple Network Management Protocol - The network management protocol of choice for TCP/IP-based Internet.

## **SOCKET**

(1) The Berkeley UNIX mechanism for creating a virtual connection between processes.

(2) IBM term for software interfaces that allow two UNIX application programs to talk via TCP/IP protocols.

## **Spanning-Tree Bridge Protocol (STP)**

Spanning-Tree Bridge Protocol (STP) - Part of an IEEE standard. A mechanism for detecting and preventing loops from occurring in a multi-bridged environment. When three or more LAN's segments are connected via bridges, a loop can occur. Because a bridge forwards all packets that are not recognized as being local, some packets can circulate for long periods of time, eventually degrading system performance. This algorithm ensures only one path connects any pair of stations, selecting one bridge as the 'root' bridge, with the highest priority one as identifier, from which all paths should radiate.

## **Spoofing**

A method of fooling network end stations into believing that keep alive signals have come from and returned to the host. Polls are received and returned locally at either end

## **Static IP Addresses**

A static IP address is an IP address permanently assigned to computer in a TCP/IP network. Static IP addresses are usually assigned to networked devices that are consistently accessed by multiple users, such as Server PCs, or printers. If you are using your Router to share your cable or DSL Internet connection, contact your ISP to see if they have assigned your home a static IP address. You will need that address during your Router's configuration.

## **Subnet**

For routing purposes, IP networks can be divided into logical subnets by using a subnet mask. Values below those of the mask are valid addresses on the subnet.

## **TCP**

Transmission Control Protocol - The major transport protocol in the Internet suite of protocols provides reliable, connection-oriented full-duplex streams.

## **TFTP**

Trivial File Transfer Protocol - A simple file transfer protocol (a simplified version of FTP) that is often used to boot diskless workstations and other network devices such as routers over a network (typically a LAN).

## **Telnet**

The virtual terminal protocol in the Internet suite of protocols - Allows users of one host to log into a remote host and act as normal terminal users of that host.

## **Transparent bridging**

So named because the intelligence necessary to make relaying decisions exists in the bridge itself and is thus transparent to the communicating workstations. It involves frame forwarding, learning workstation addresses and ensuring no topology loops exist (in conjunction with the Spanning-Tree algorithm).

## **UDP**

User Datagram Protocol - A connectionless transport protocol that runs on top of TCP/IP's IP. UDP, like TCP, uses IP for delivery; however, unlike TCP, UDP provides for exchange of datagrams without acknowledgments or guaranteed delivery. Best suited for small, independent requests, such as requesting a MIB value from an SNMP agent, in which first setting up a connection would take more time than sending the data.

## **UNI signaling**

User Network Interface signaling for ATM communications.

## **Virtual Connection (VC)**

A link that seems and behaves like a dedicated point-to-point line or a system that delivers packets in sequence, as happens on an actual point-to-point network. In reality, the data is delivered across a network via the most appropriate route. The sending and receiving devices do not have to be aware of the options and the route is chosen only when a message is sent. There is no pre-arrangement, so each virtual connection exists only for the duration of that one transmission.

## **WAN**

Wide area network - A data communications network that spans any distance and is usually provided by a public carrier (such as a telephone company or service provider).

## Appendix B Cabling / Connection

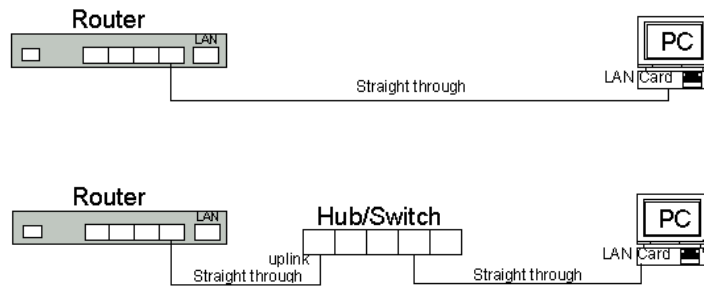
Network cables connect PCs in an Ethernet network Category 5, called "Cat5" for short is commonly used type of network cable today.

Cat 5 cables are tipped with RJ-45 connectors, which fit into RJ-45 port.

Straight-through vs. Crossover Cables:



LAN Connection:



To check LEDs light up when you finish connecting two pieces of hardware.